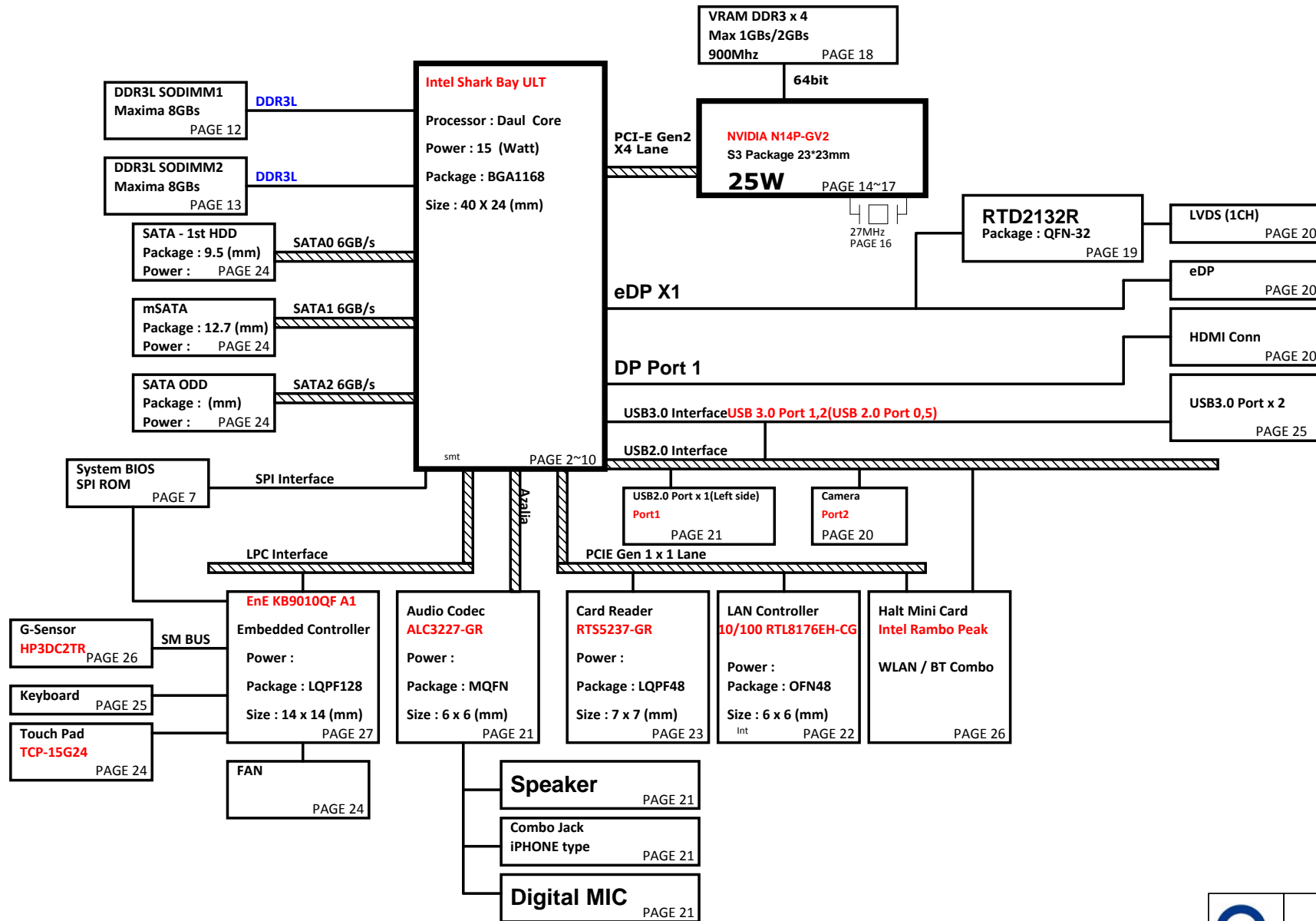
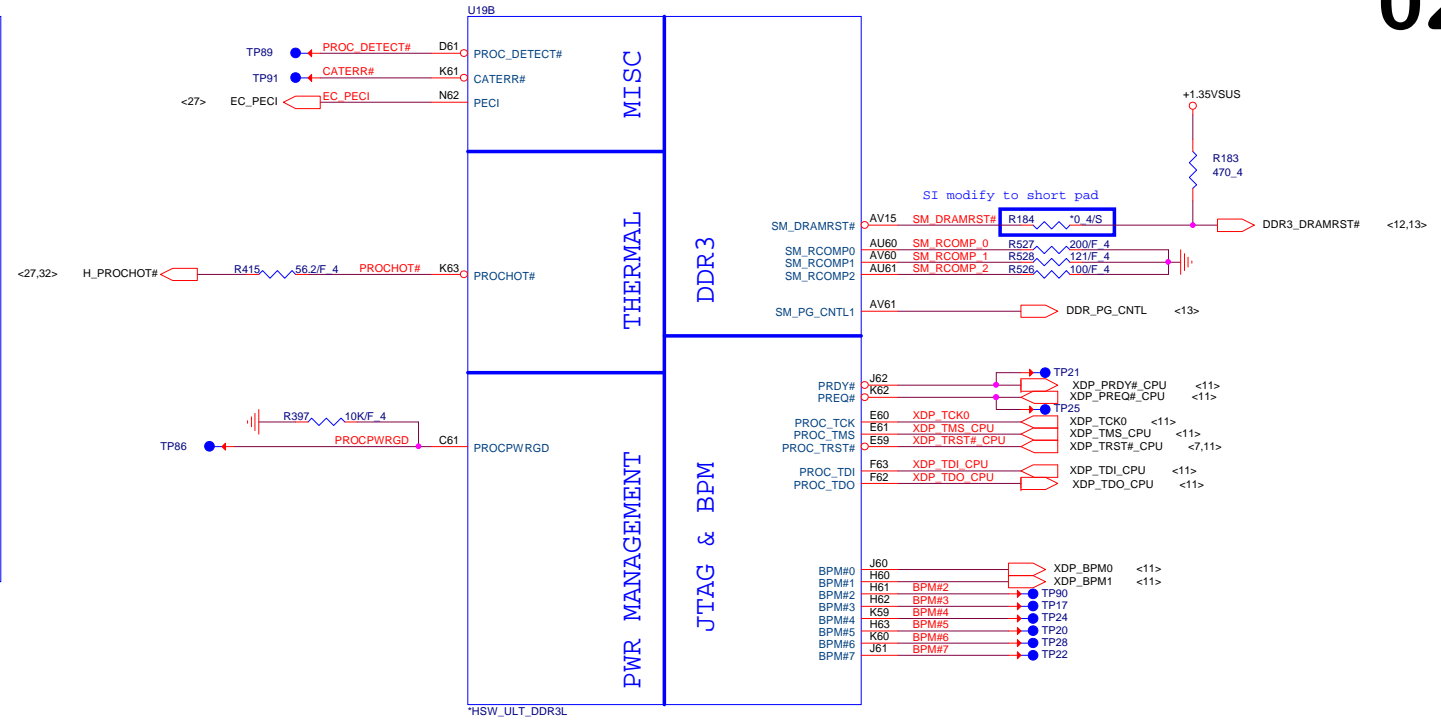


U82 DIS (14"/15.6") Ultra/Slim Intel Shark Bay ULT Platform Block Diagram

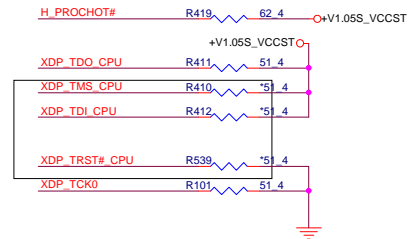
PCB 6L STACK UP

LAYER 1 : TOP
LAYER 2 : SGND
LAYER 3 : IN1(High)
LAYER 4 : IN2(Low)
LAYER 5 : SVCC
LAYER 6 : BOT

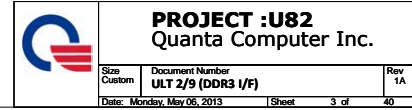


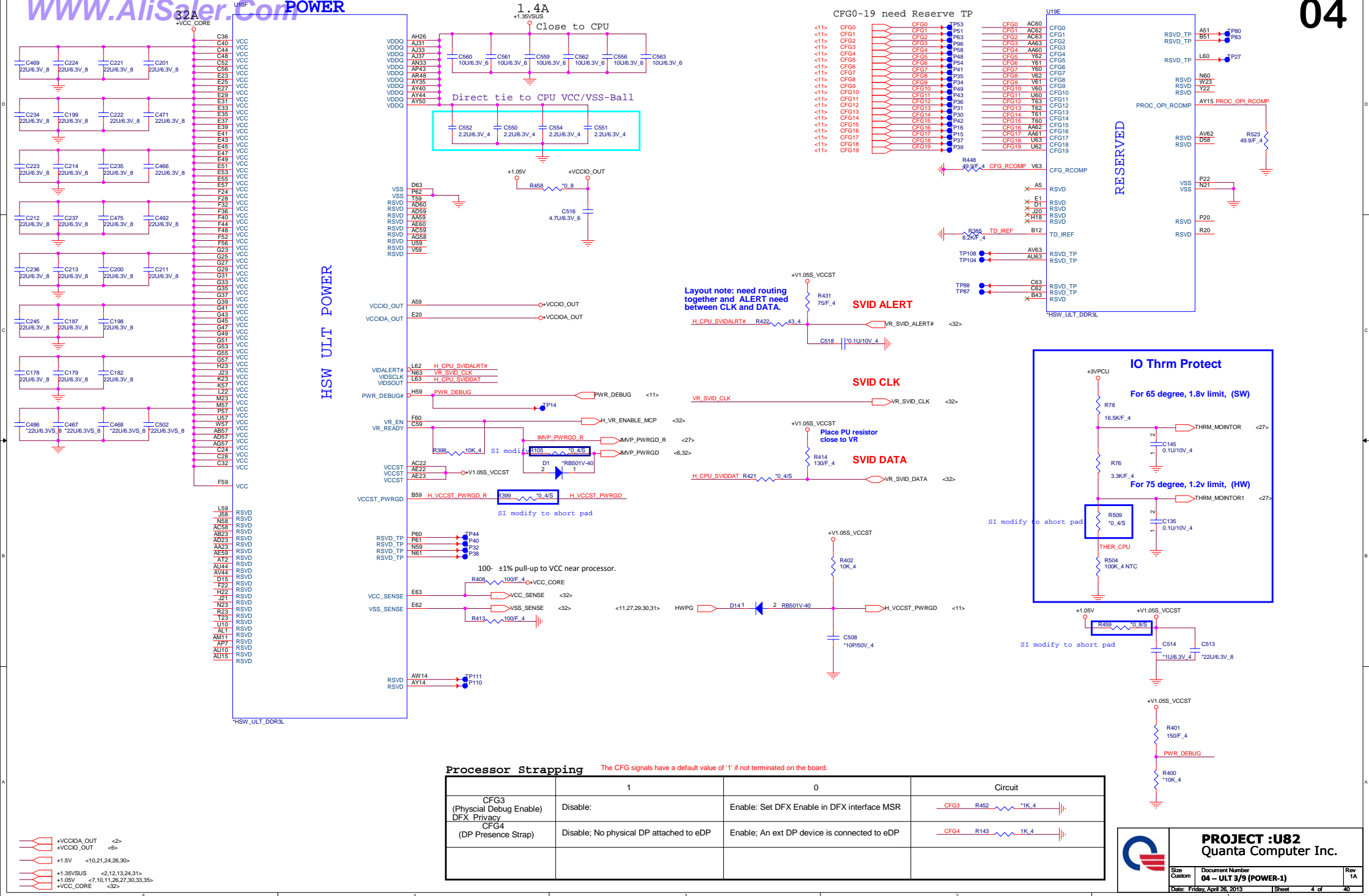


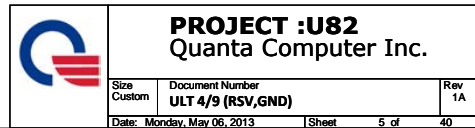
DEL or not?

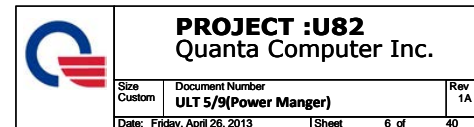


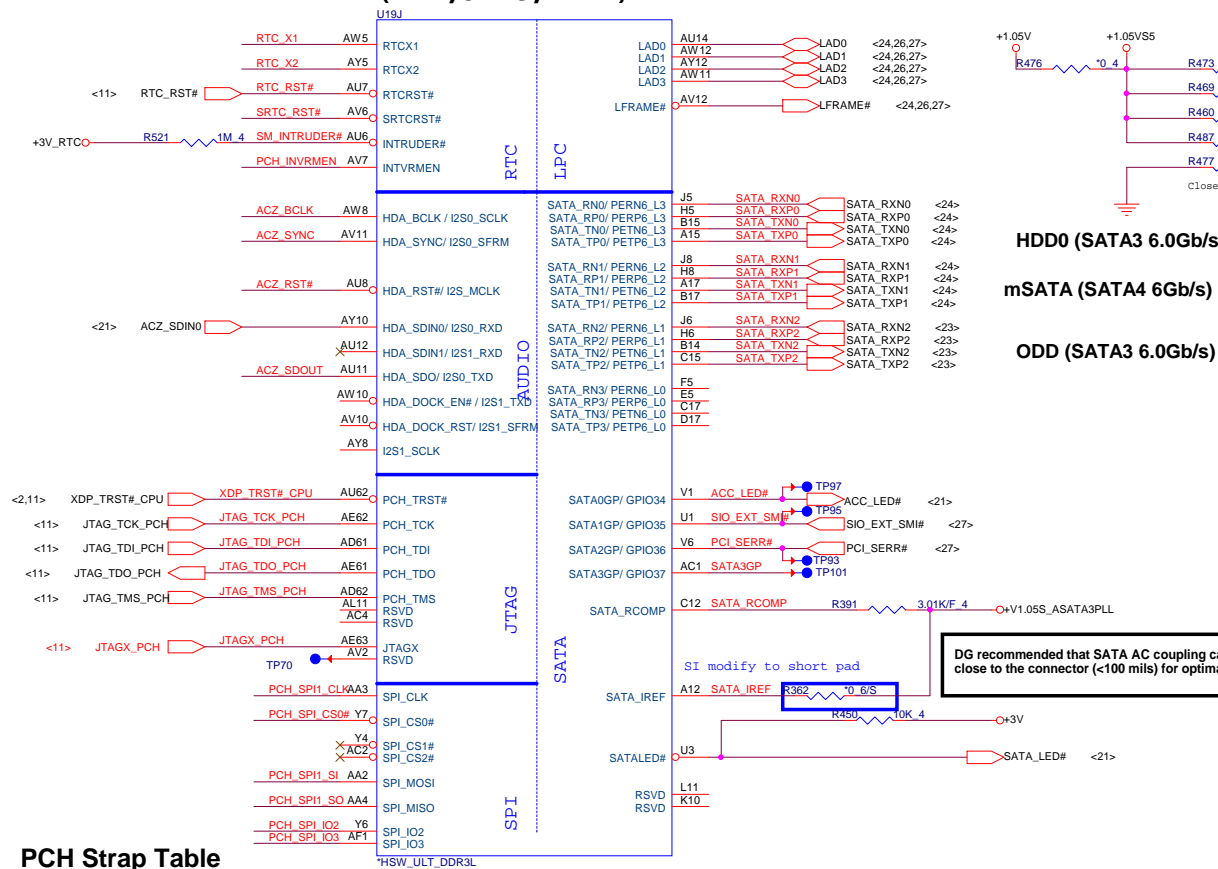
WWW.AliSaler.Com







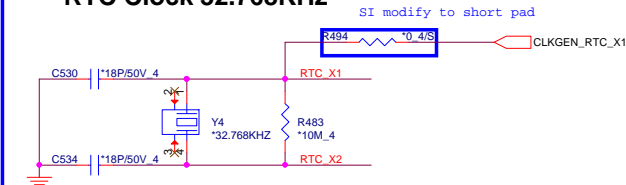




PCH Strap Table

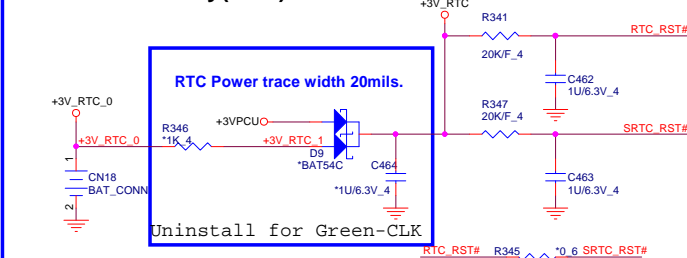
Pin Name	Strap description	Sampled	Configuration	Circuit						
SPKR	No reboot mode setting	PWROK	0 = Default (weak pull-down 20K) 1 = Setting to No-Reboot mode							
SDIO_D0 /GPIO66	Top-Block Swap	PWROK	0 = "top-block swap" mode 1 = Default (weak pull-up 20K)							
INTVRMEN	Integrated 1.05V VRM enable	ALWAYS	Should be always pull-up							
HDA_SDO /I2S0_TXD	Flash Descriptor Security Only for Interposer	PWROK	0 = Default (weak pull-down 20K) 1 = Can be Overriden							
GSPI0_MOSI /GPIO86	Boot BIOS Selection	PWROK	<table border="1"><thead><tr><th>GNT0#</th><th>Boot Location</th></tr></thead><tbody><tr><td>1</td><td>LPC</td></tr><tr><td>0</td><td>SPI(Default)</td></tr></tbody></table>	GNT0#	Boot Location	1	LPC	0	SPI(Default)	
GNT0#	Boot Location									
1	LPC									
0	SPI(Default)									
GPIO15	TLS Confidentiality	PWROK	0 = ME Crypto Transport Layer Security cipher suite with no confidentiality(Default) 1 = Intel ME Crypto TLS cipher suite with confidentiality							
DSWVRMEN	Deep Sx Well On-Die Voltage Regulator Enable	ALWAYS	Should be always pull-up							
				<div><div><27> PCH_SPI_CS0#_R <27> PCH_SPI_CLK_R <27> PCH_SPI_SI_R <27> PCH_SPI_SO_R</div><div><div>PCH_SPI_CS0#_R PCH_SPI_CLK_R PCH_SPI_SI_R PCH_SPI_SO_R</div></div></div>						

RTC Clock 32.768KHz

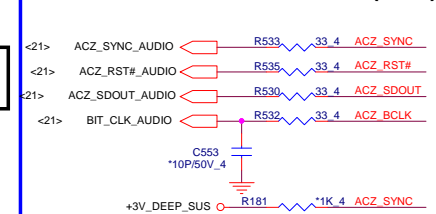


no stuff if use green Clock

RTC Circuitry(RTC)



HDA Bus(CLG)

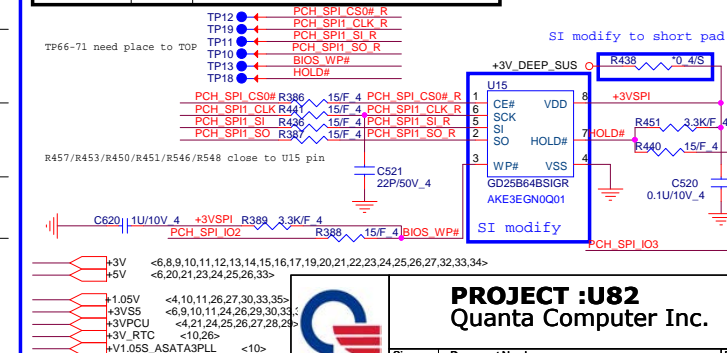


GPIO Pull UP



Vender	Size	P/N
MXIC	8MB	AKE3EZN0Z00 (MX25L6473EM21-10G)
Winbond	8MB	AKE3EFP0N07 (W25Q64FVSSIQ)
GigaDevice	8MB	AKE3EGN0Q01 (GD25B64BSIGR)
Socket		DFHS08FS023

PCH SPI ROM(CLG)

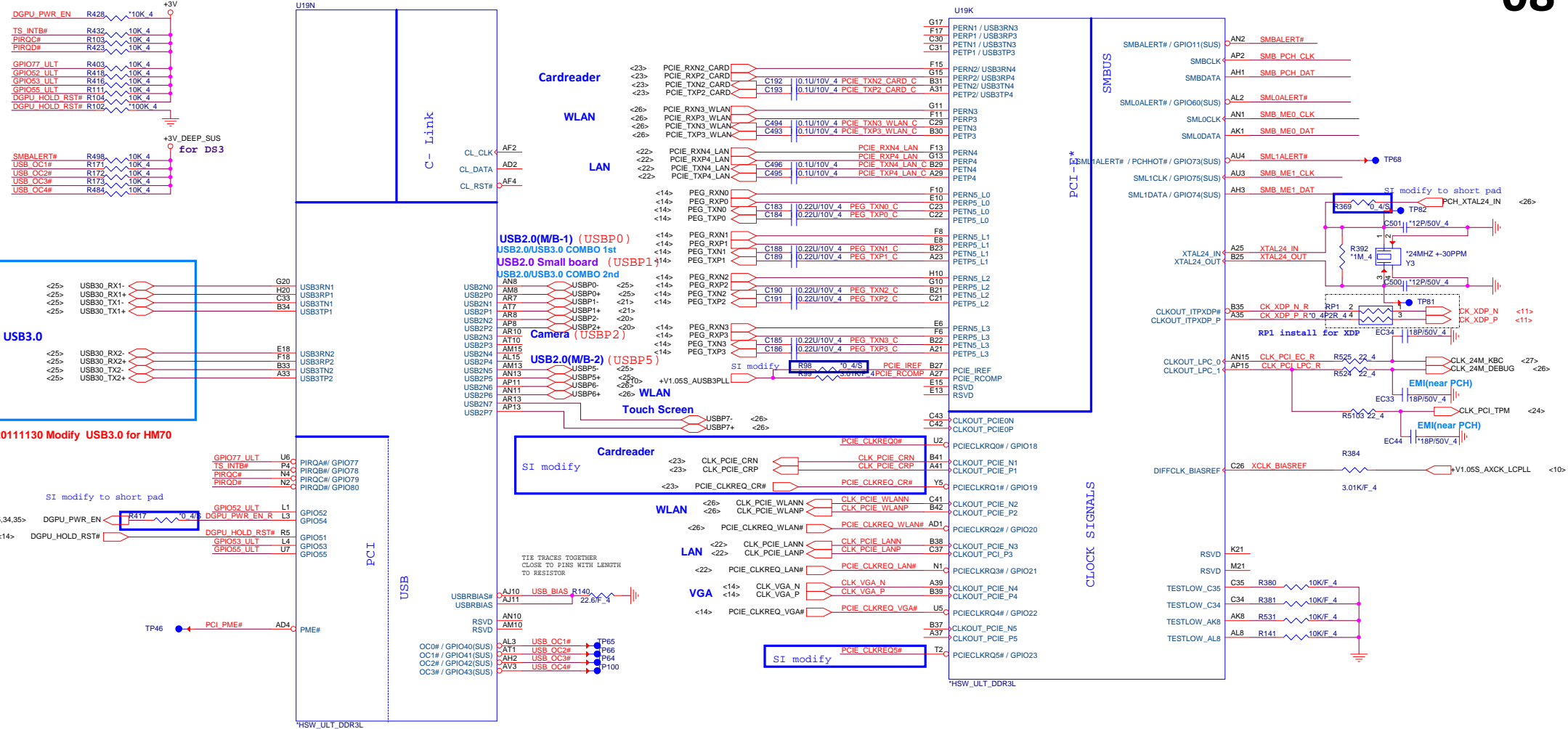


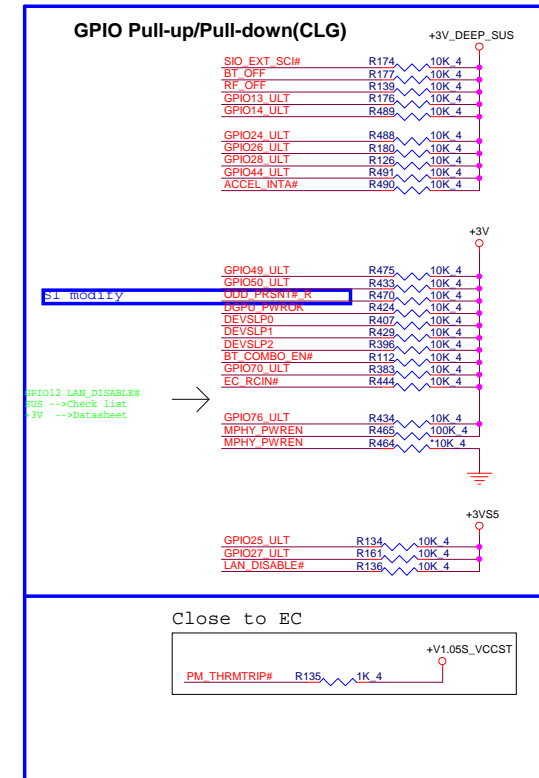
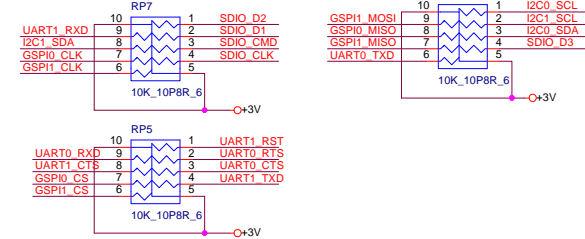
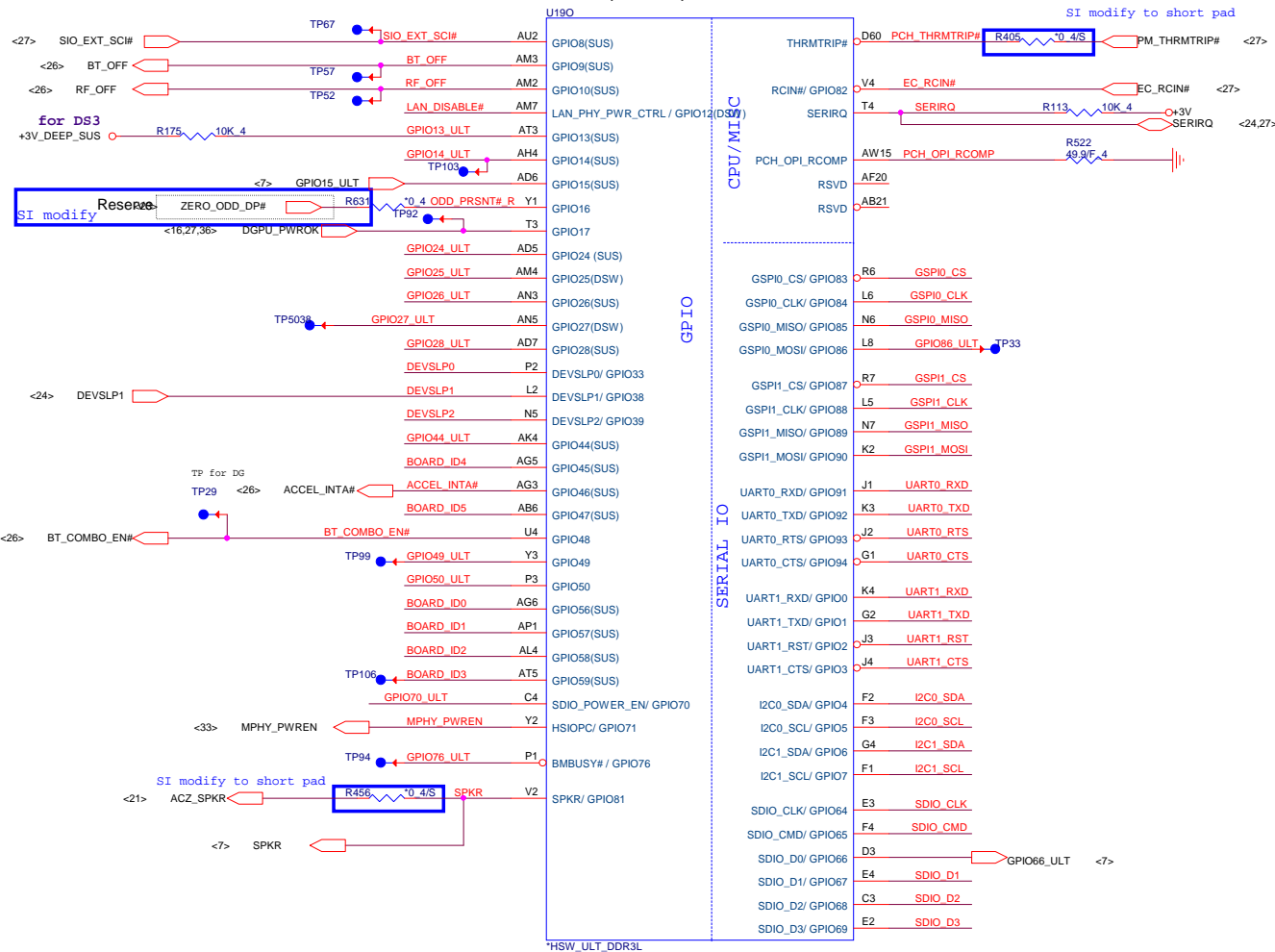
PROJECT :U82
Quanta Computer Inc.

Size	Document Number	Rev
Custom	ULT 6/9(SATA/HDA)	1A
Date: Friday, April 26, 2013	Sheet 7 of 40	

PC/USBOC# Pull-up(CLG)

Lynx Point-LP Platform Controller Hub (HDA, JTAG, SATA)





Model	BOARD_ID5 UMA:0 DIS:1	BOARD_ID4 14:0 15:1	BOARD_ID3	BOARD_ID2	BOARD_ID1	BOARD_ID0
U83 DIS-14	1	0	0	0	0	0
U83 UMA-15	0	1	0	0	0	0
	0	0	0	0	0	0
	0	0	0	0	0	0
	0	0	0	0	0	0
	0	0	0	0	0	0

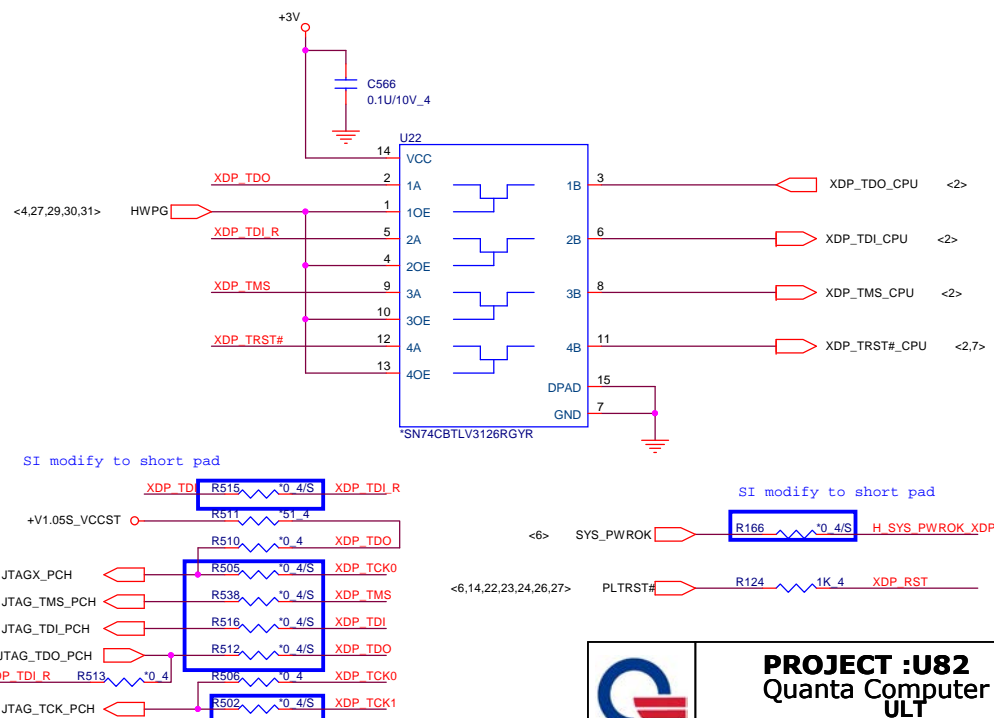
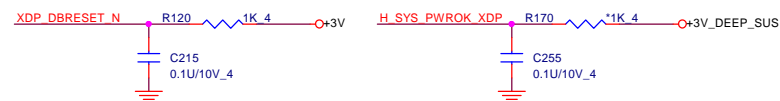
DIS	UMA
Ra	Rb
Rb	Ra

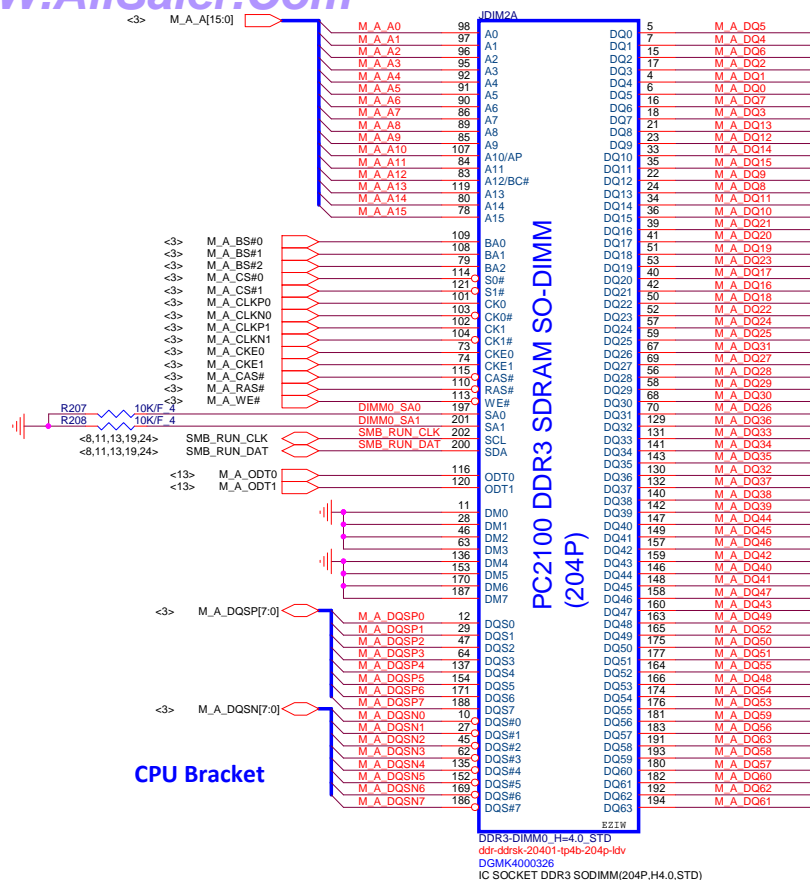
<6,7,8,10,11,12,13,14,15,16,17,19,20,21,22,23,24,25,26,27,32,33,34> +3V
<6,10,11,24,26,29,30,33,35> +3VSS

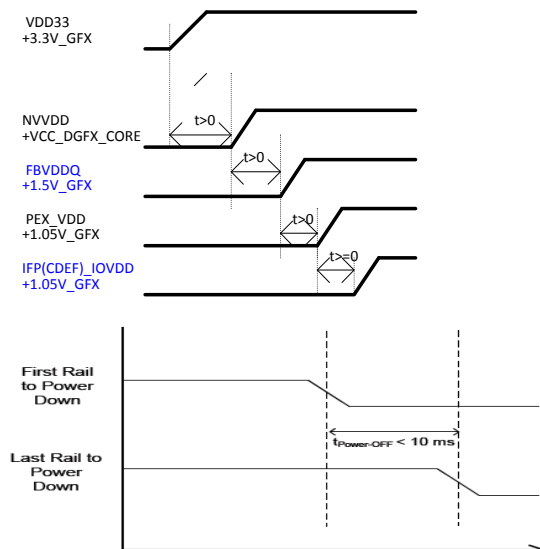
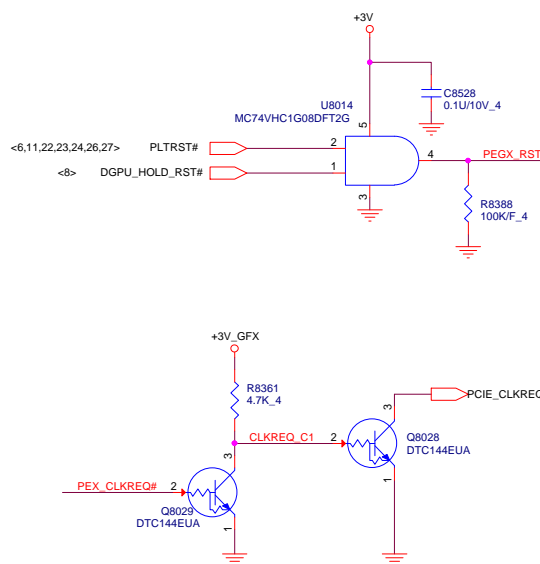
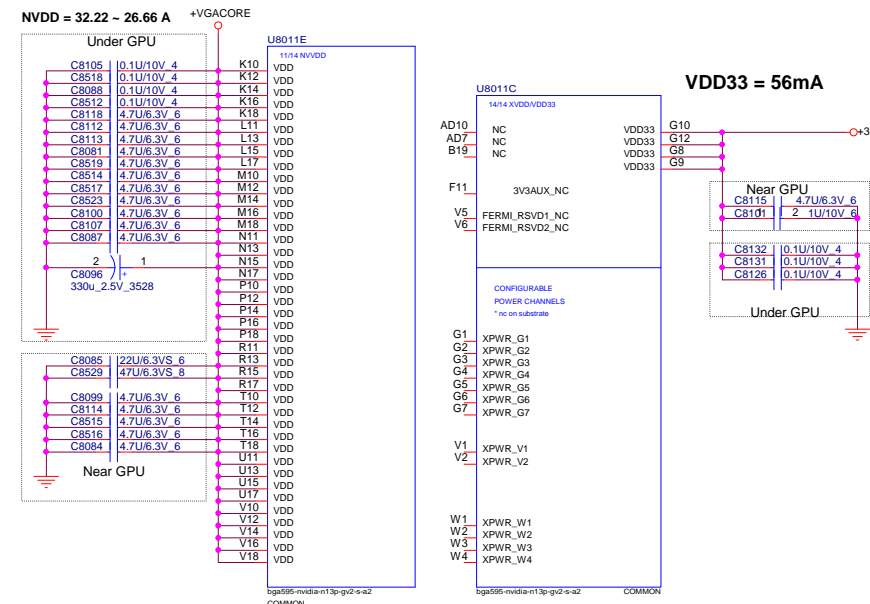
PROJECT :U82
Quanta Computer Inc.


Size Custom	Document Number ULT 8/9 (GPIO/MISC)	Rev 1A
Date: Friday, April 26, 2013	Sheet	9 of 40

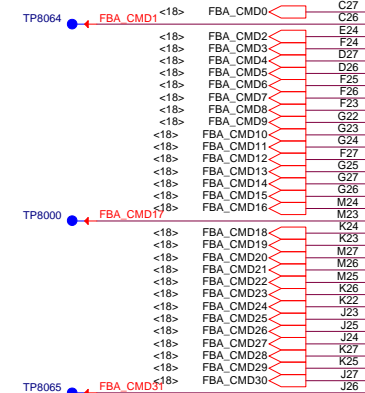
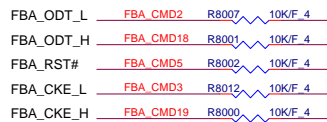




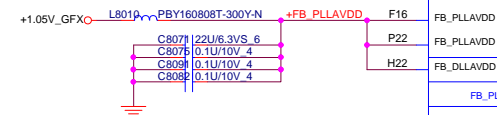




	PROJECT :U82 Quanta Computer Inc.		
	Size Custom	Document Number N14M-GS (PCIE 1F) /NVDD	Rev 2A
	Date: Friday, April 26, 2013 Sheet 14 of 40		

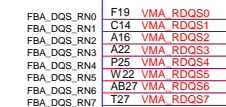
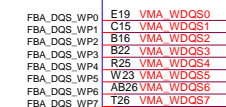
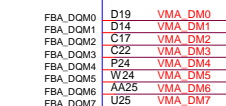
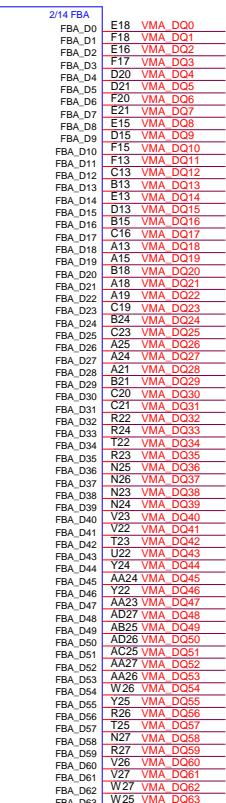


FB_PLLAVDD = 55mA



FB_DLLAVDD = 15mA

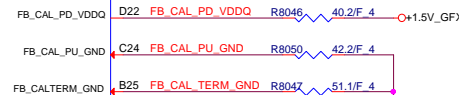
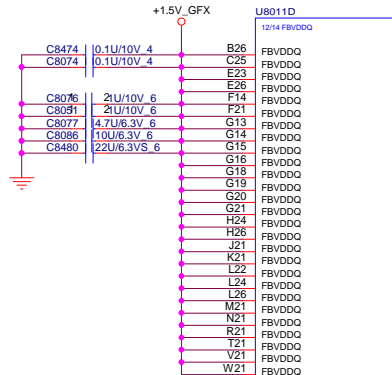
SMT



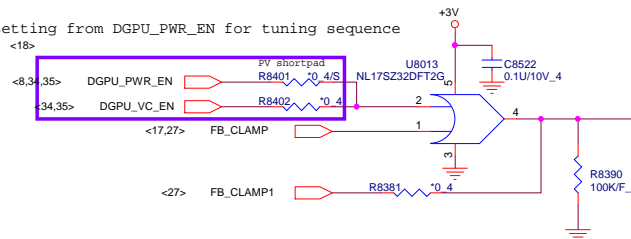
FB_VREF_PROBE

VMA_DQ[63:0]

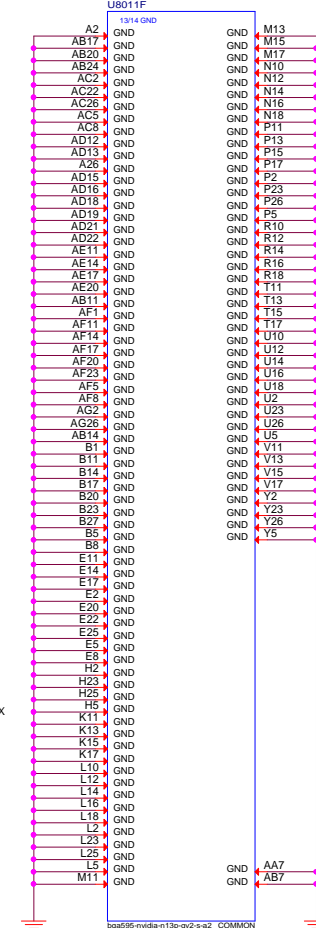
FBVDDQ + FBVDD = 3.116A



For support GC6

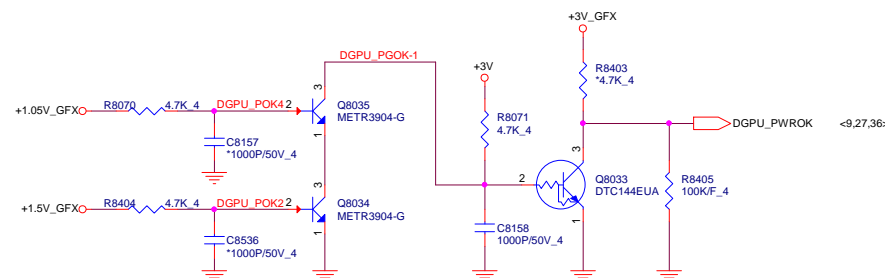
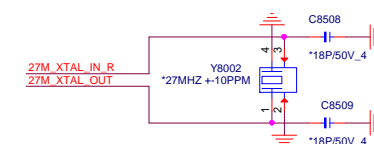
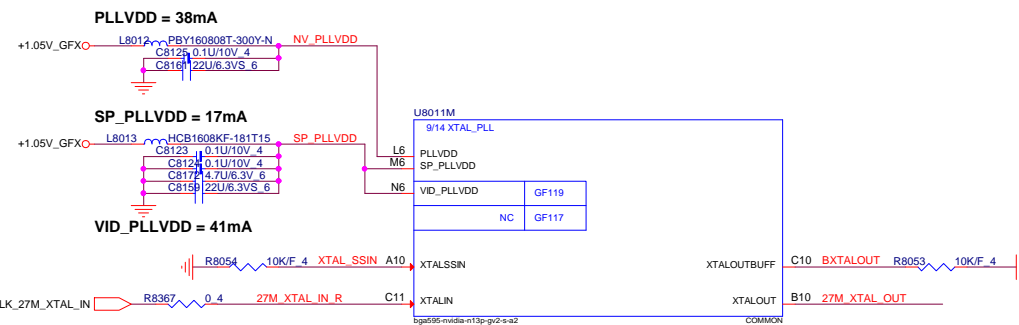
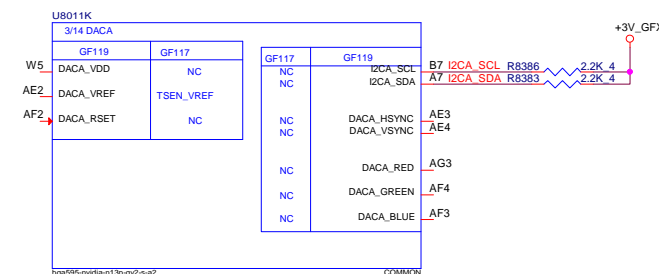
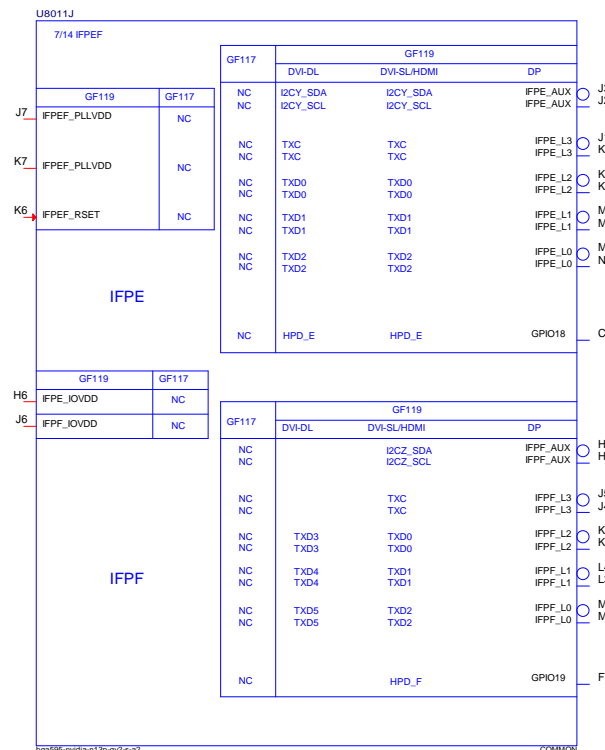
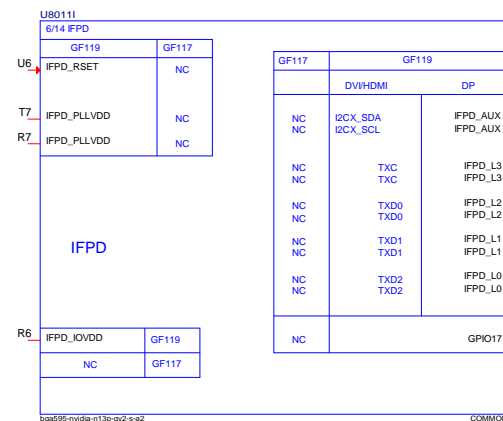
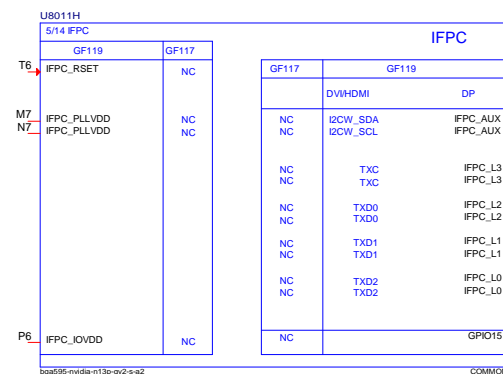
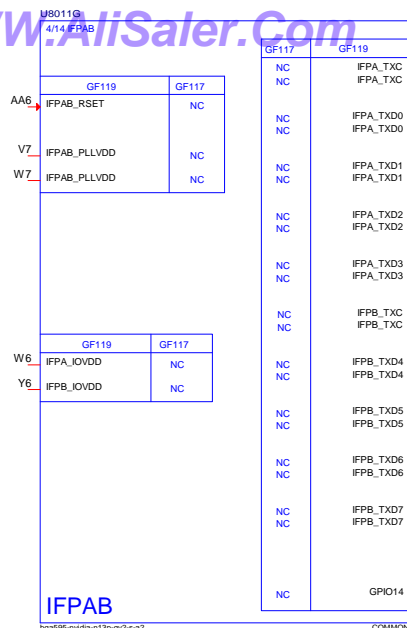


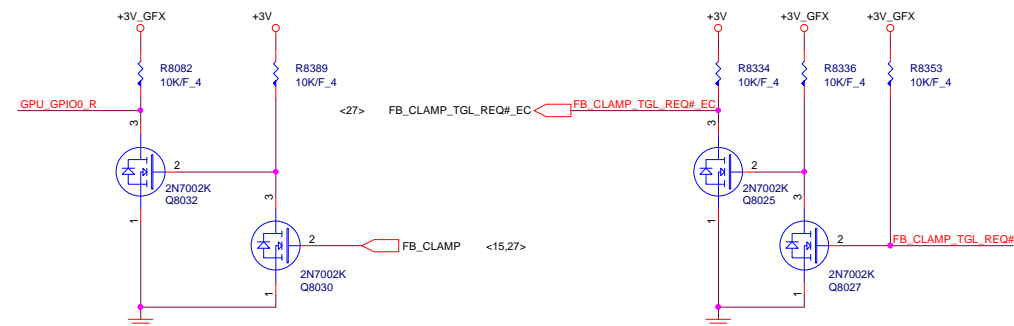
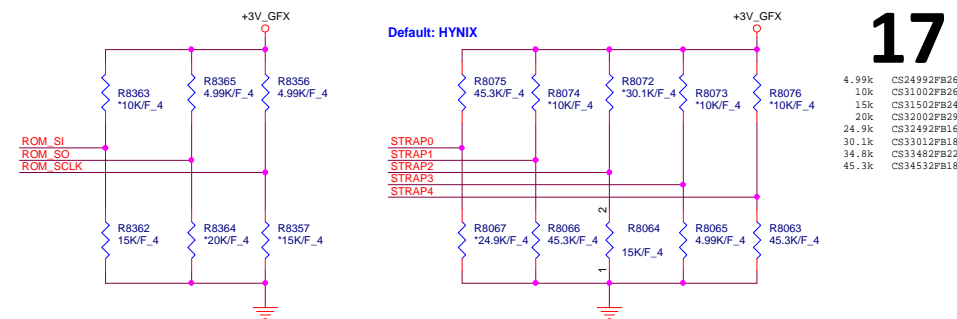
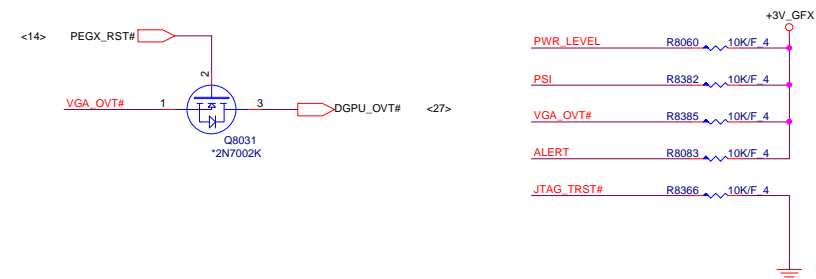
Need Check footprint & PN!



PROJECT :U82
Quanta Computer Inc.

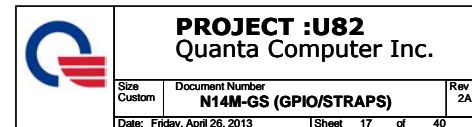
Size Custom	Document Number N14M-GS (MEMORY/GND)	Rev 2A
Date: Monday, May 06, 2013	Sheet 15	of 40

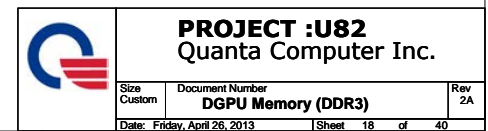


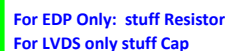


RAMCFG [3:0]	DESCRIPTION	Vendor	Vendor P/N	QCI P/N	
0000					
0000	DDR3 128Mx16x4, 64bit, 2Gb,900MHz	micron	MT41J128M16JT-107G:K	AKD5MGSTL06	AKD5MGSTL08
0110	DDR3 128Mx16x4, 64bit, 2Gb,900MHz	HYNIX	H5TQ2G63DFR-11C	AKD5MGWTW16	AKD5MGWTW13
0111	DDR3 128Mx16x4, 64bit, 2Gb,900MHz	SAMSUNG	K4W2G1646E-BC11	AKD5MGGT520	AKD5MGGT522

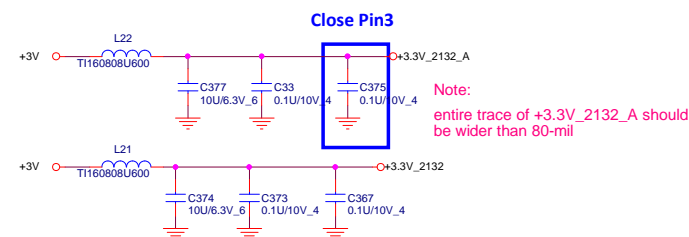
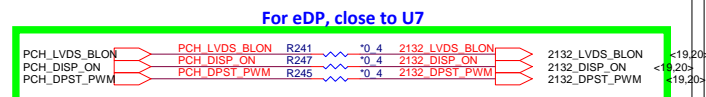
GPIO	I/O	PIN	USAGE
0	IN	FB_CLAMP_MON	FB Clamp monitor
1	OUT	MEM_VDD_CTL	Memory VDD VID
2	OUT	LCD_BL_PWM	Panel Backlight PWM
3	OUT	LCD_VCC	PANEL POWER ENABLE
4	OUT	LCD_BLEN	PANEL BACKLIGHT ENABLE
5	OUT	Reserved	--
6	OUT	FB_CLAMP_TGL_REQ	Active low FB Clamp toggle request
7	OUT	3D VISION	3D VISION LEFT/RIGHT signal
8	I/O	OVERT	ACTIVE LOW THERMAL OVER TEMP
9	I/O	ALERT	ACTIVE LOW THERMAL ALERT
10	OUT	MEM_VREF_CTL	MEMMORY VREF CONTROL
11	OUT	PWR_VID	GPU CORE_VDD PWM Control signal
12	IN	PWR_LEVEL	AC Power detect or power supply overdraw input
13	OUT	PSI	Phase Shedding



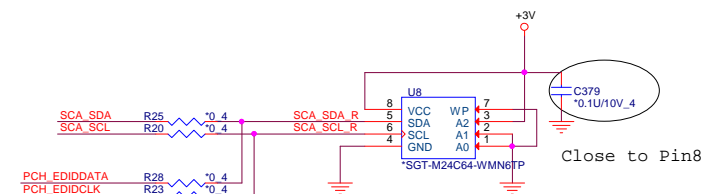




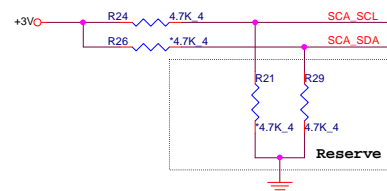
To eDP



Address=0xA8



RTD2132S => R25, R20
RTD2132R => R28, R23

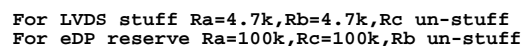
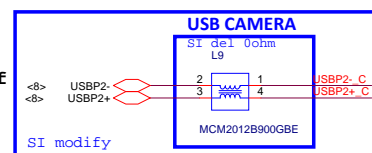


		MODE_CFG0(PIN30)	
		0	1
MODE_CFG1(PIN31)	0	X	EP MODE
	1	ROM ONLY MODE	EEPROM MODE

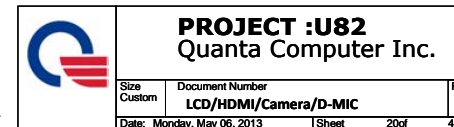
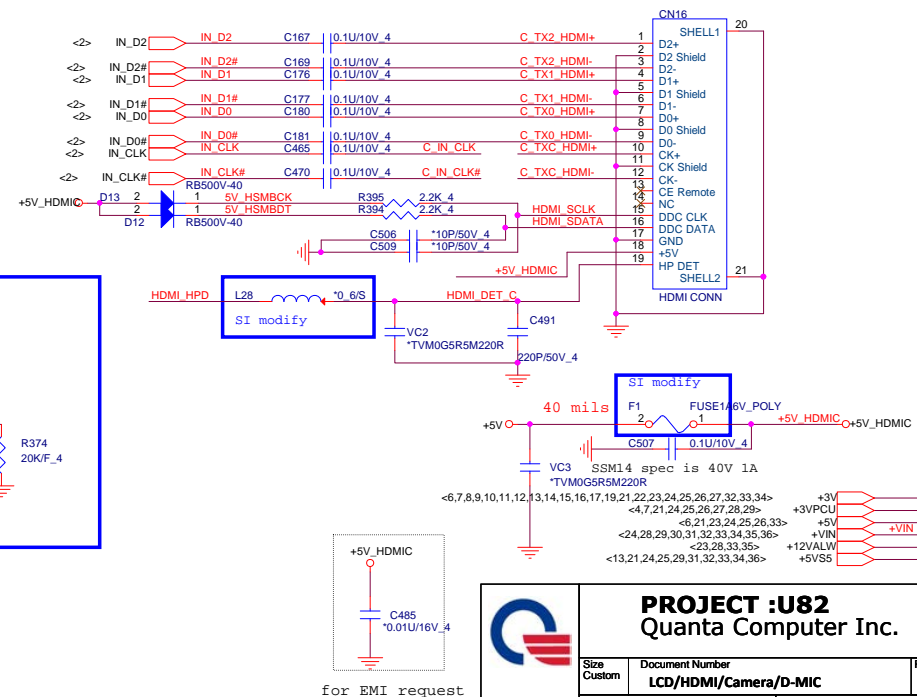
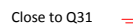


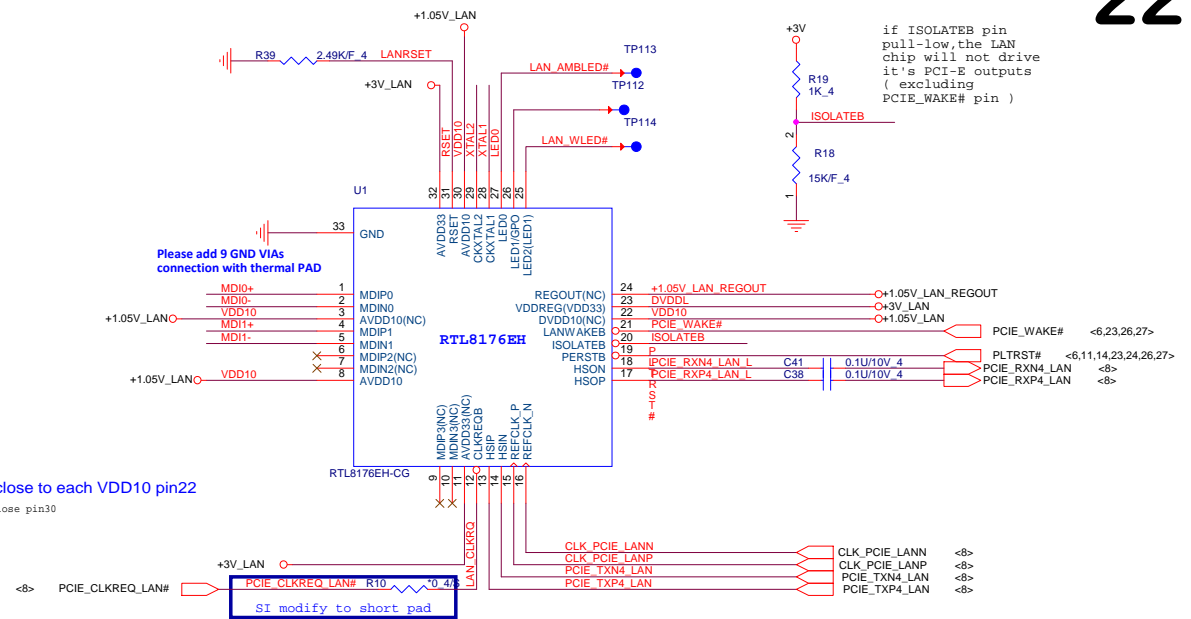
PROJECT :U82
Quanta Computer Inc.

Size Custom	Document Number LVDS converter RTD2132R	Rev 1A
Date: Friday, April 26, 2013	Sheet 19 of 40	

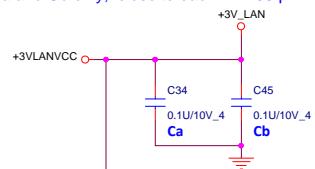
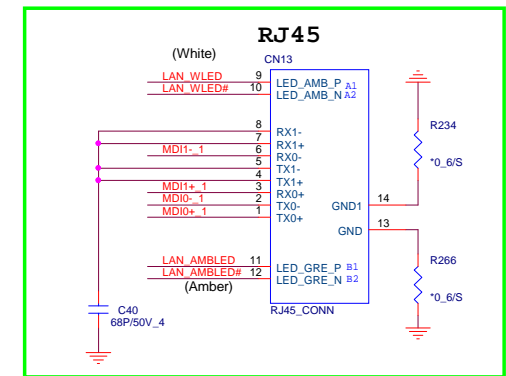


HDMI SMBus Isolation





TWD Type

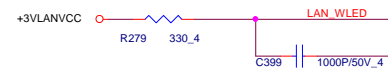


Place Cc and Cd close to each VDD33 pin-- 23



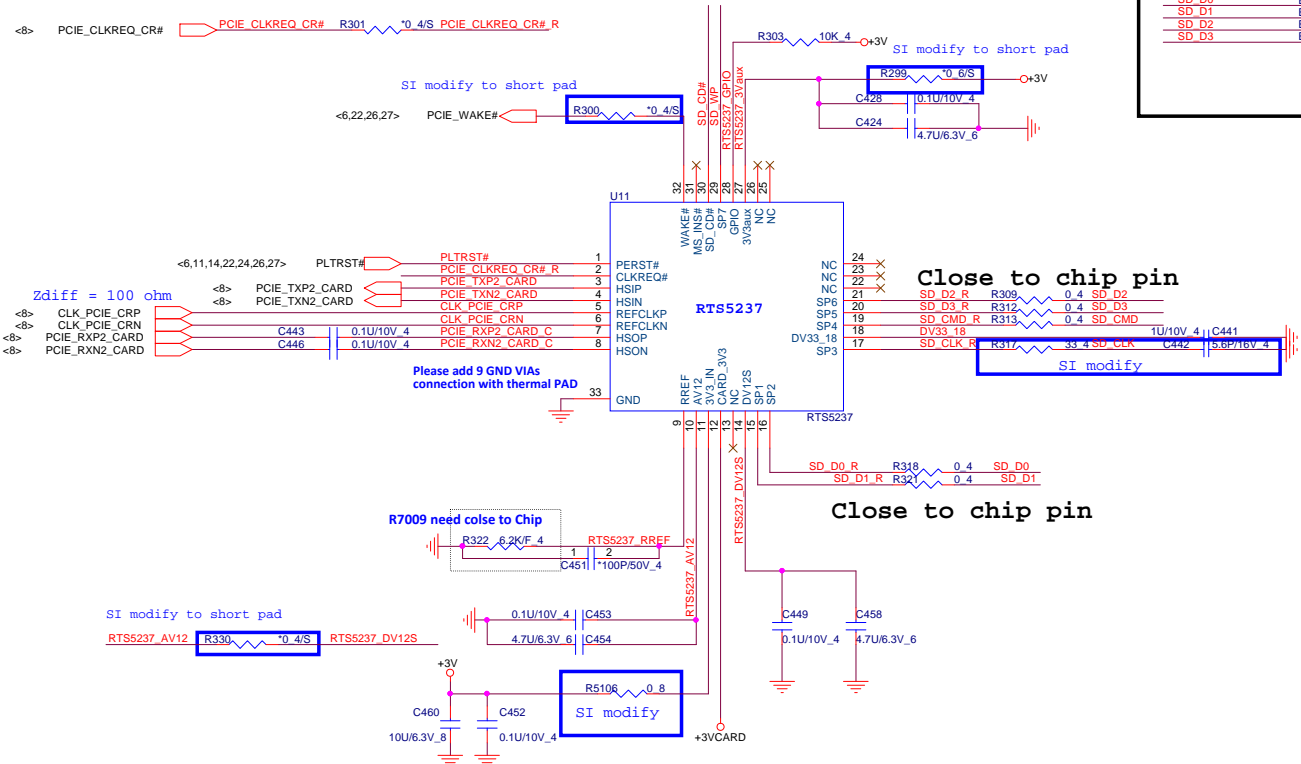
<6,7,8,9,10,11,12,13,14,15,16,17,19,20,21,23,24,25,26,27,32,33,34>
<26,33>

+3V
+3VLAVCC



PROJECT :U82
Quanta Computer Inc.

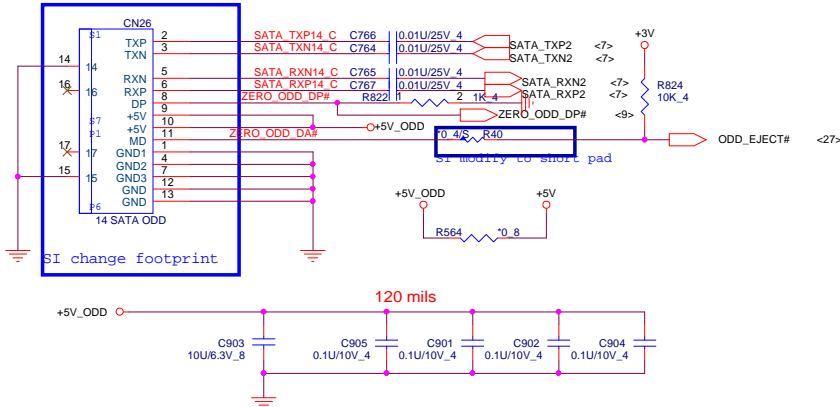
Size Custom	Document Number LAN RTL8176EH/RJ45	Rev 1A
Date: Friday, April 26, 2013	Sheet 22	of 40



SATA ODD CONNECTOR

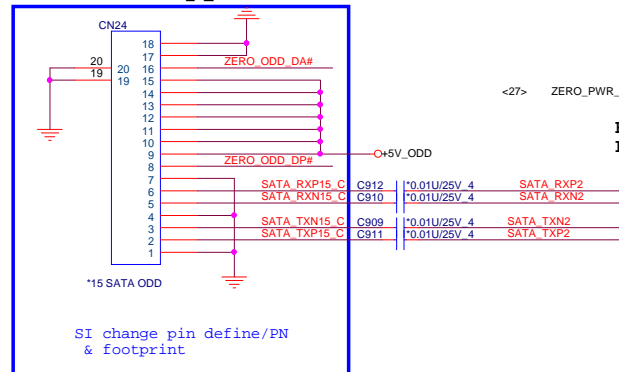
14" SATA ODD

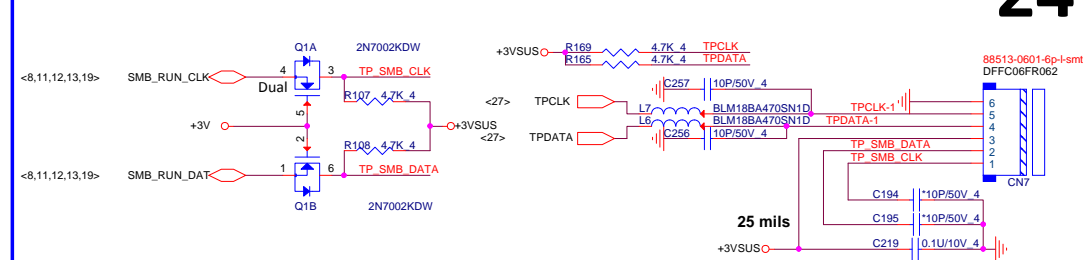
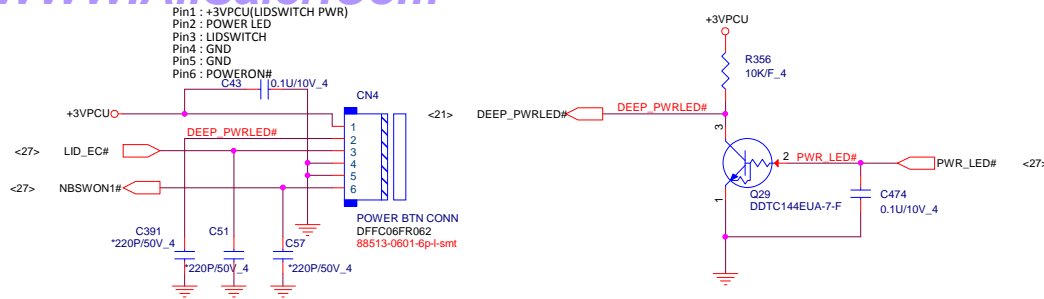
Bypass CAP close conn



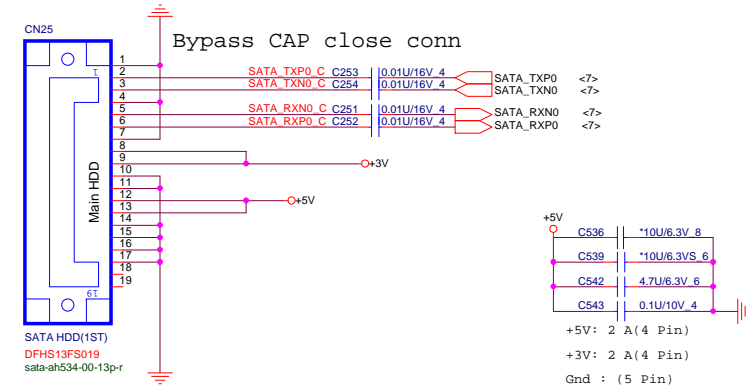
15" SATA ODD

New Type

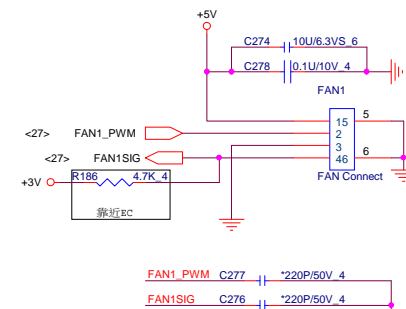




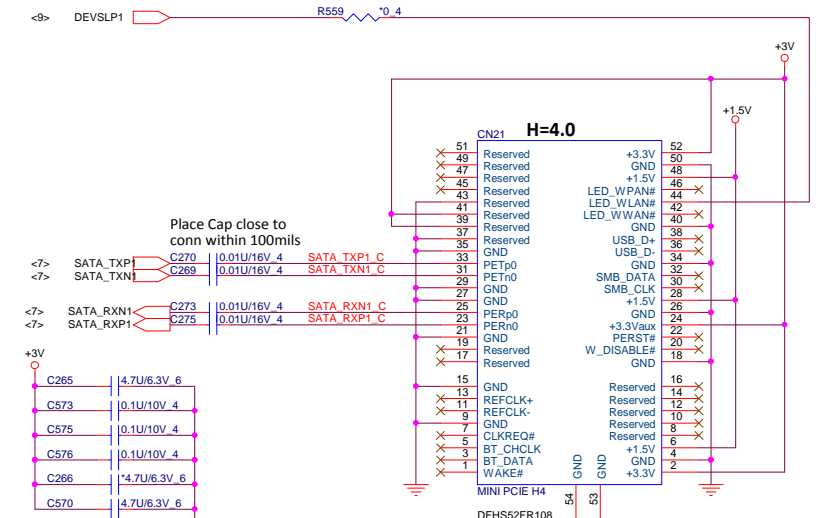
SATA HDD Connector(Cable type)



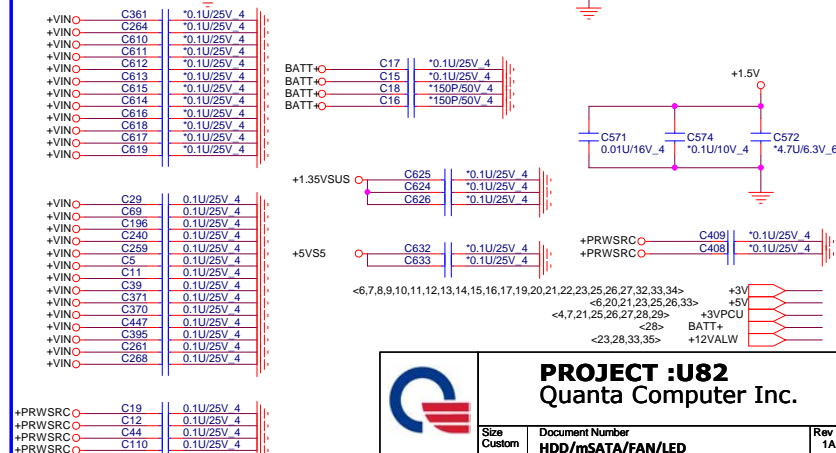
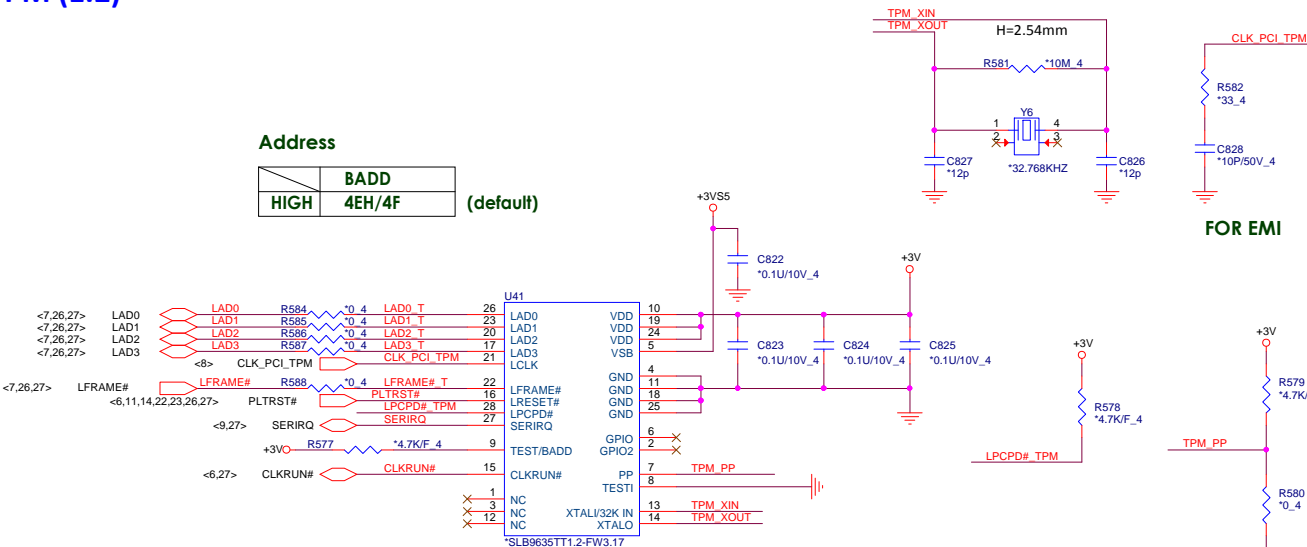
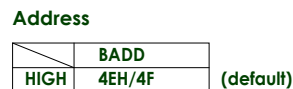
FAN

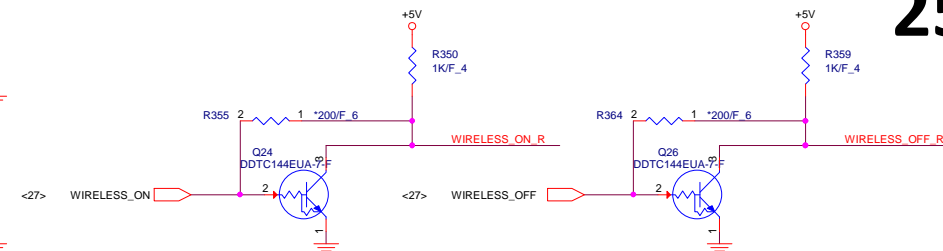
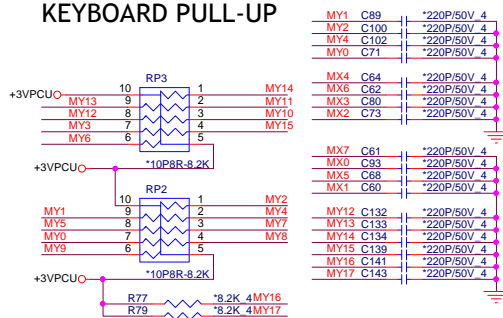
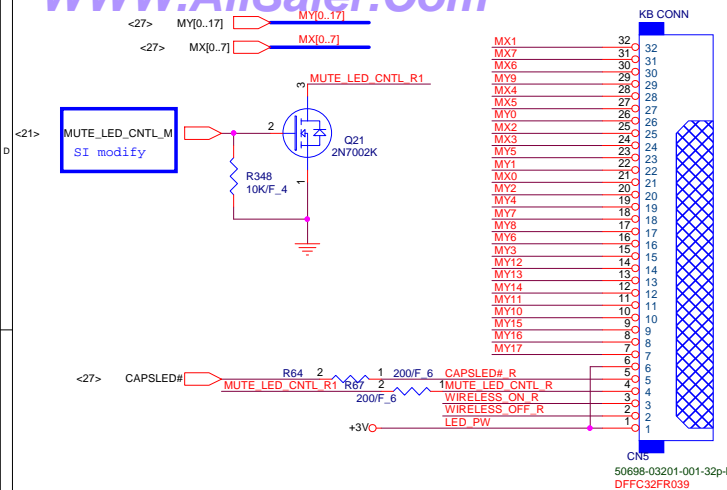


Mini PCI-E Card 2- Full size mSATA



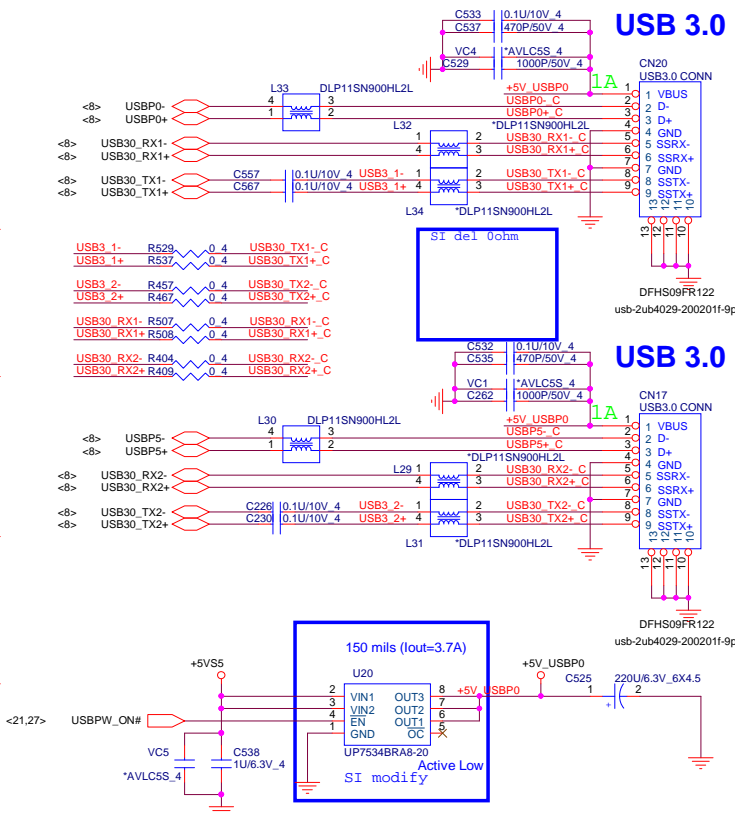
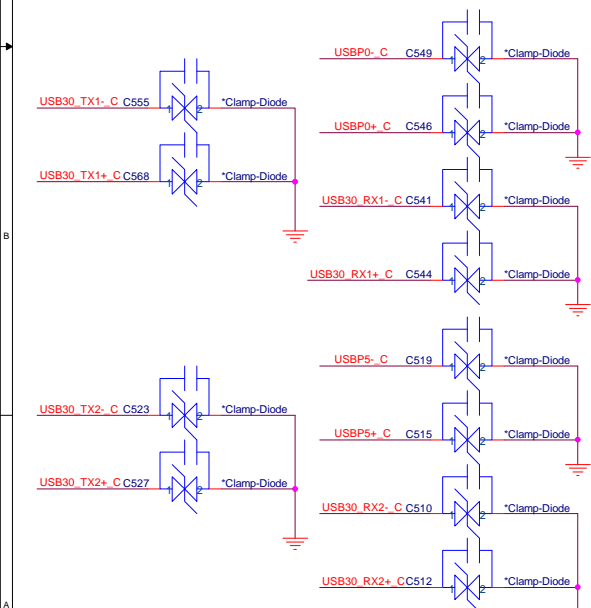
TPM (1.2)



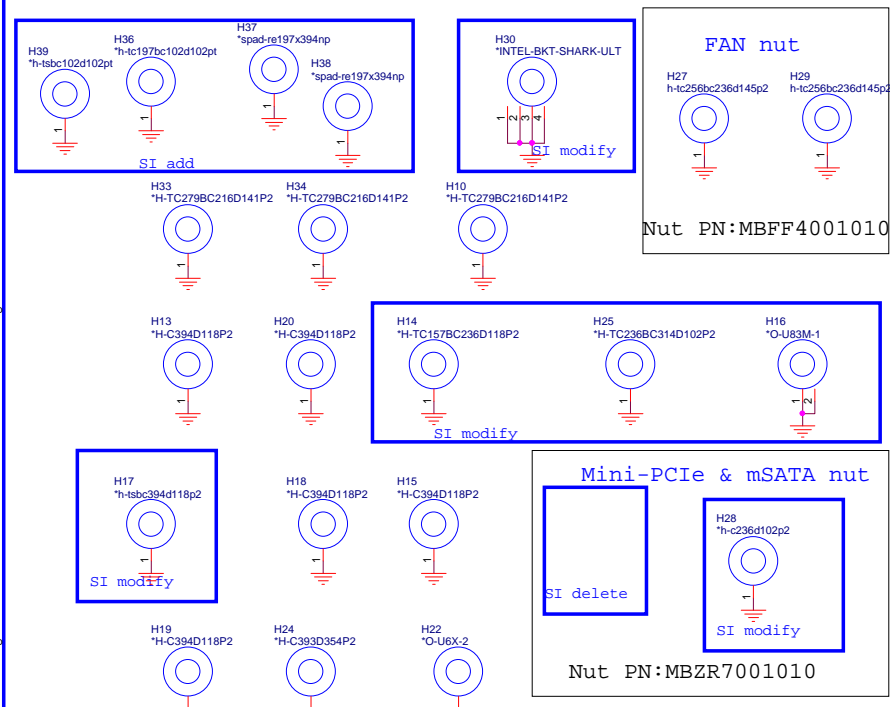


R6X Type

USB 2.0/3.0 Combo

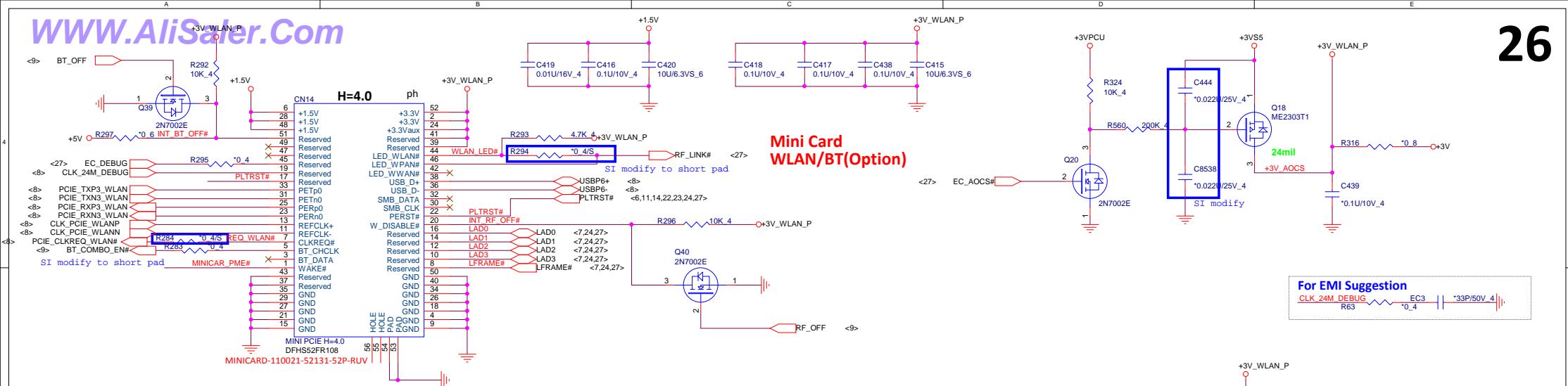


Hole

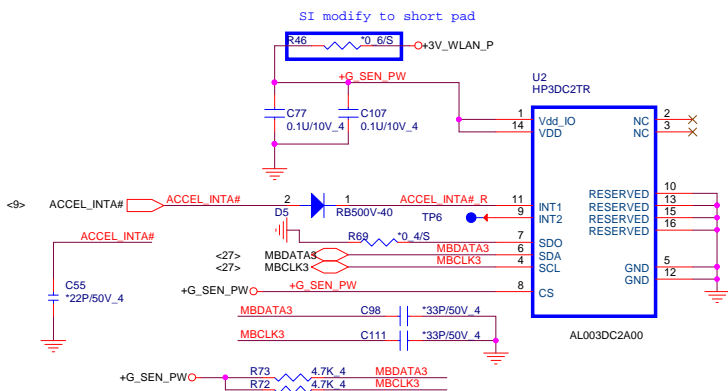


PROJECT :U82
Quanta Computer Inc.

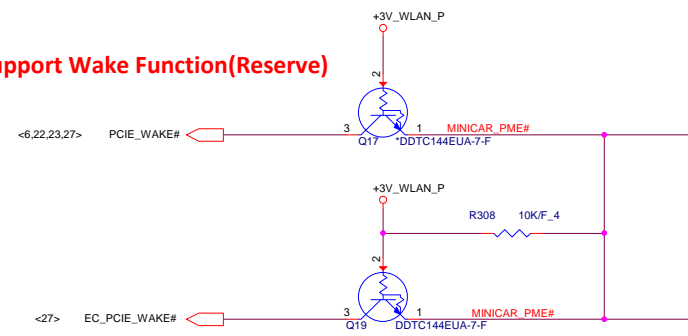
Size Custom	Document Number USB3.0/KB	Rev 1A
Date: Monday, May 06, 2013	Sheet	25 of 40



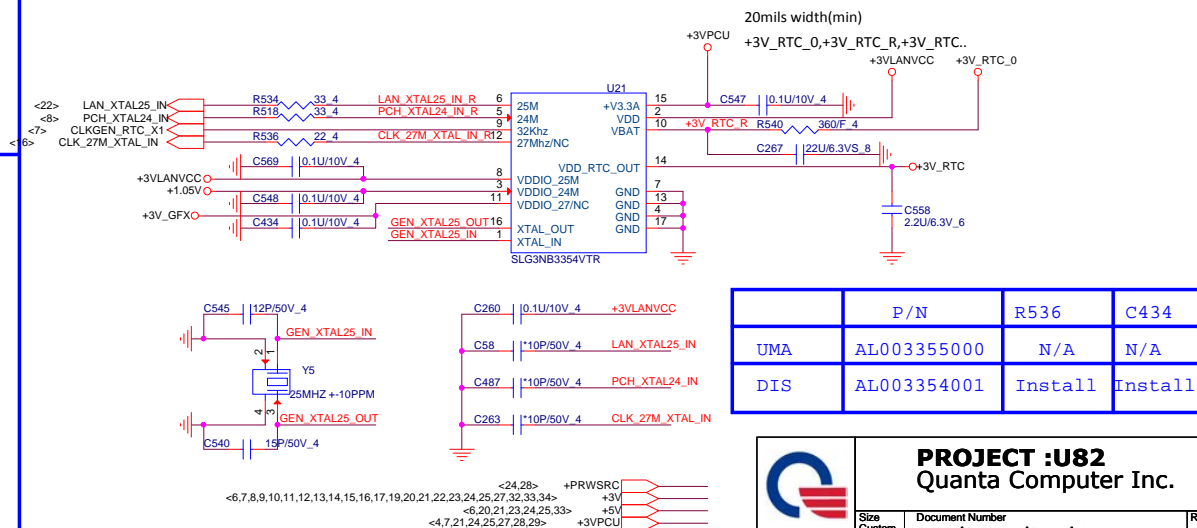
Accelerometer Sensor



Support Wake Function(Reserve)



Green CLK Circuitry

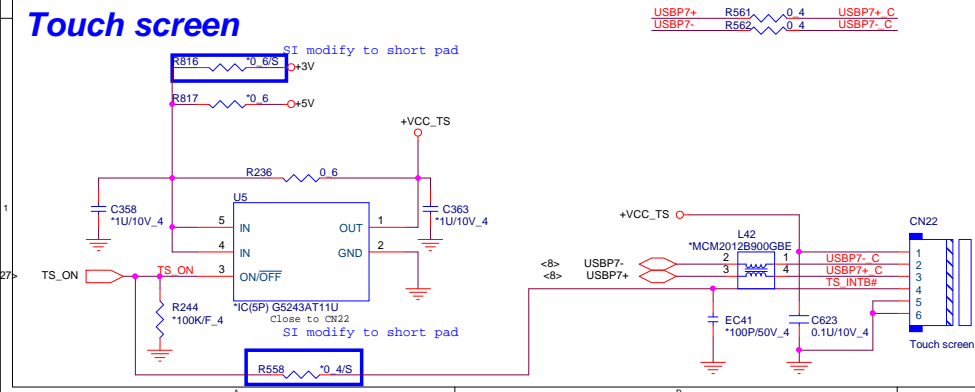


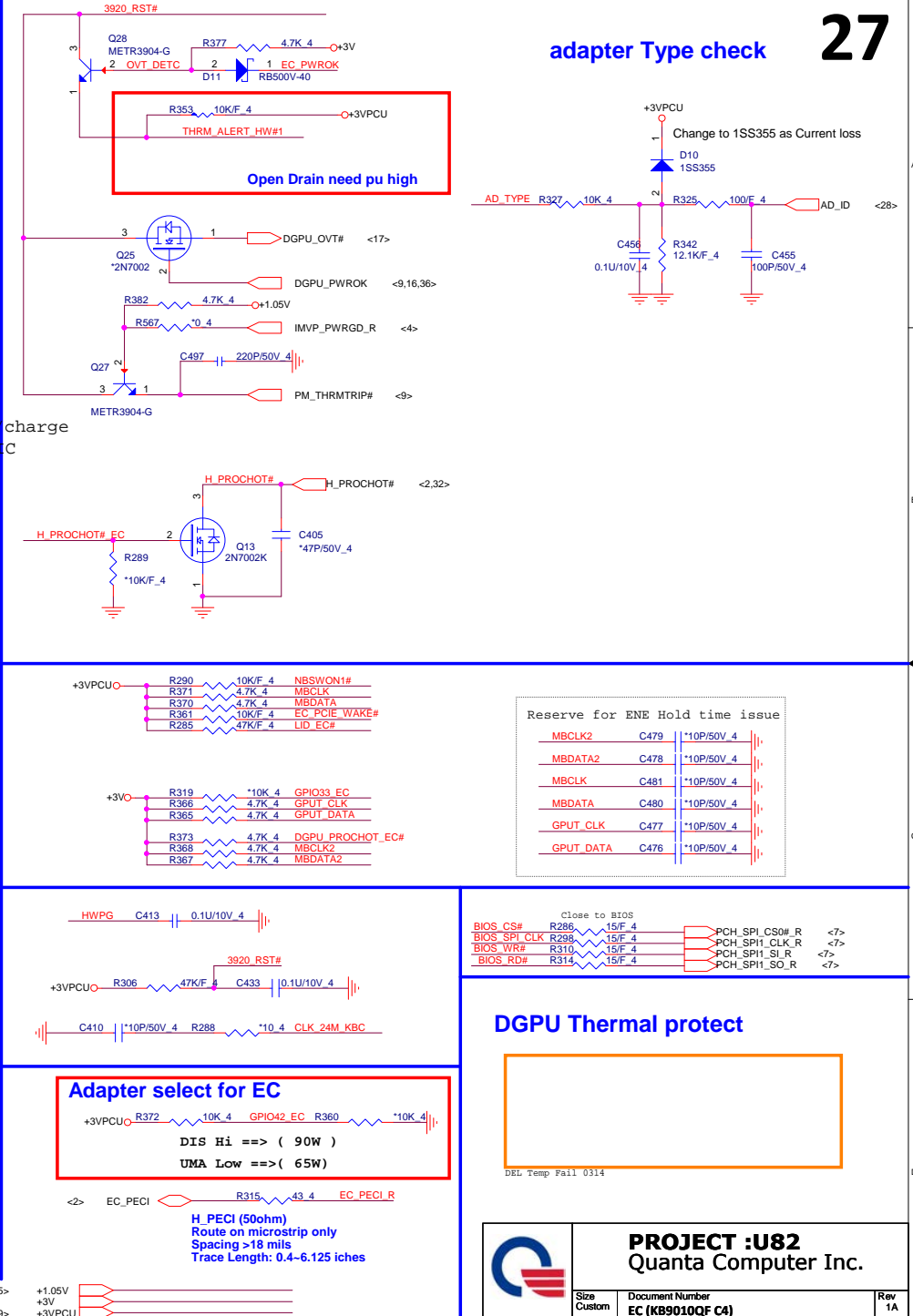
	P/N	R536	C434
UMA	AL003355000	N/A	N/A
DIS	AL003354001	Install	Install

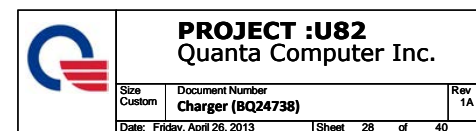
PROJECT :U82
 Quanta Computer Inc.

Size	Document Number	Rev
Custom	WLAN/G-Sensor/G-CLK/TS	1A
Date: Friday, May 03, 2013	Sheet	26 of 40

Touch screen

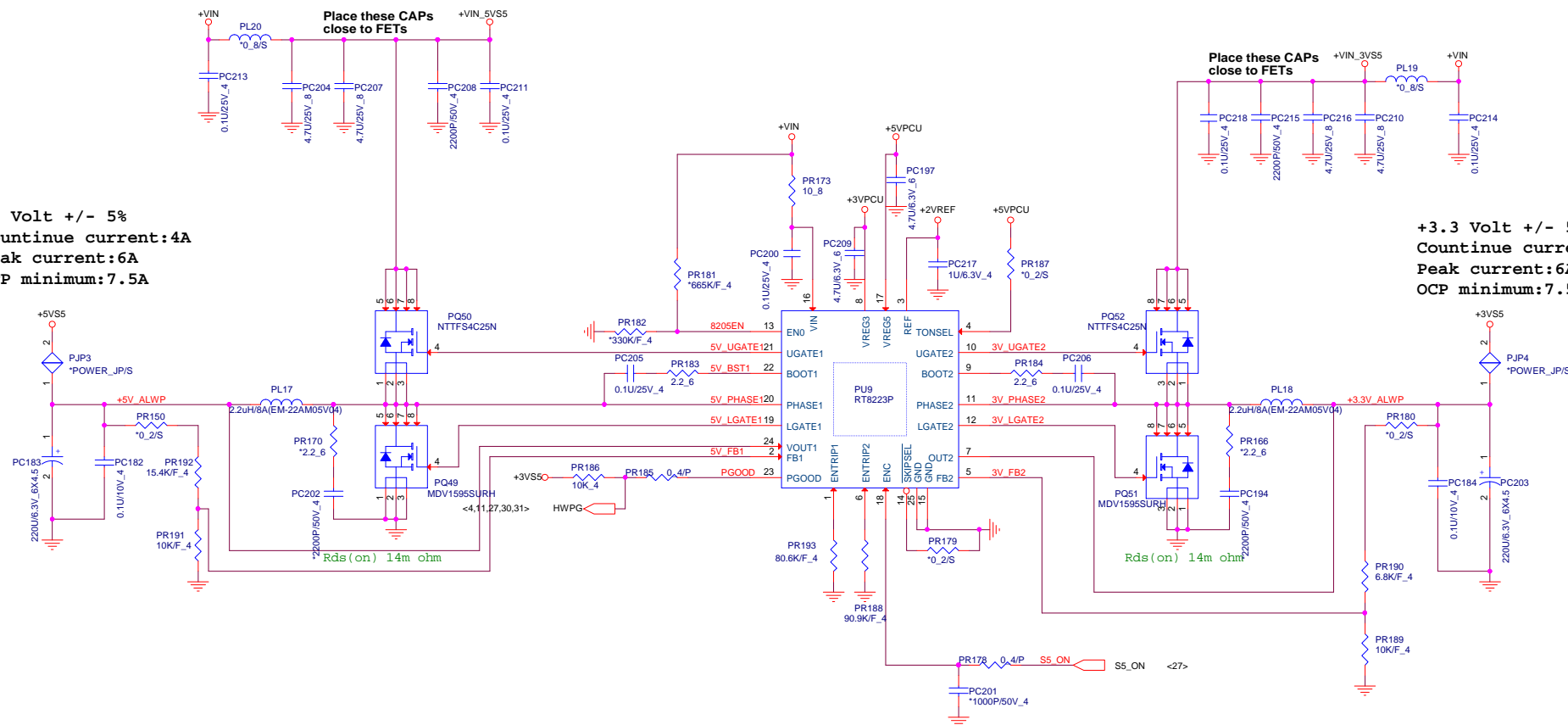


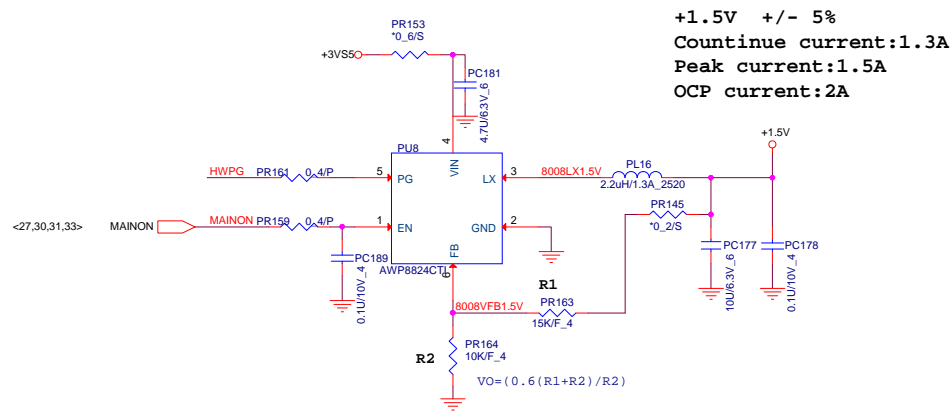
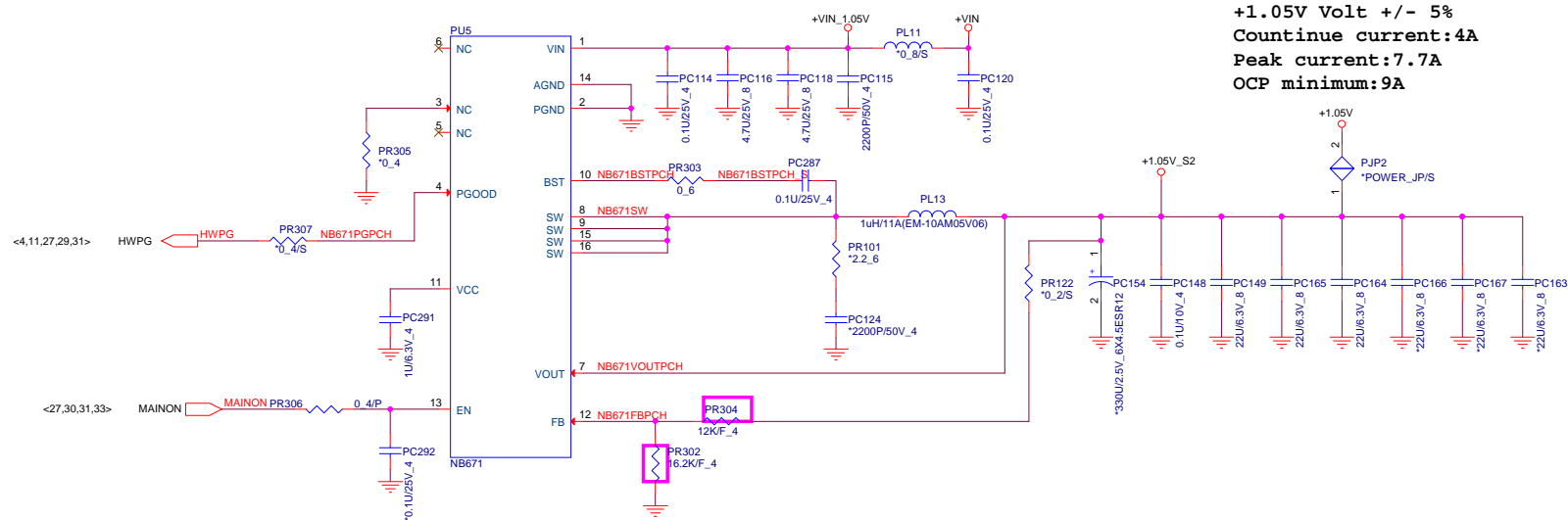




+5 Volt +/- 5%
Countinue current:4A
Peak current:6A
OCP minimum:7.5A

+3.3 Volt +/- 5%
Countinue current:4A
Peak current:6A
OCP minimum:7.5A

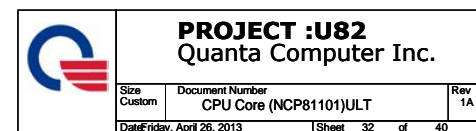


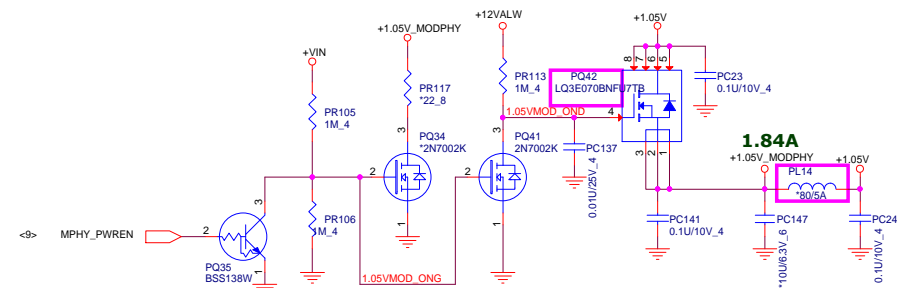


+VIN <20,24,28,29,31,32,33,34,35,36>
 +3VSS <6,9,10,11,24,26,29,33,35>
 +5VSS <13,21,24,25,29,31,32,33,34,36>
 +5VPCU <13,28,29>

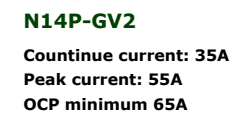
	PROJECT :U82		
	Quanta Computer Inc.		
	Size Custom	Document Number +1.05V (NB671)1.5V	Rev 1A
Date: Friday, April 26, 2013		Sheet 30	of 40

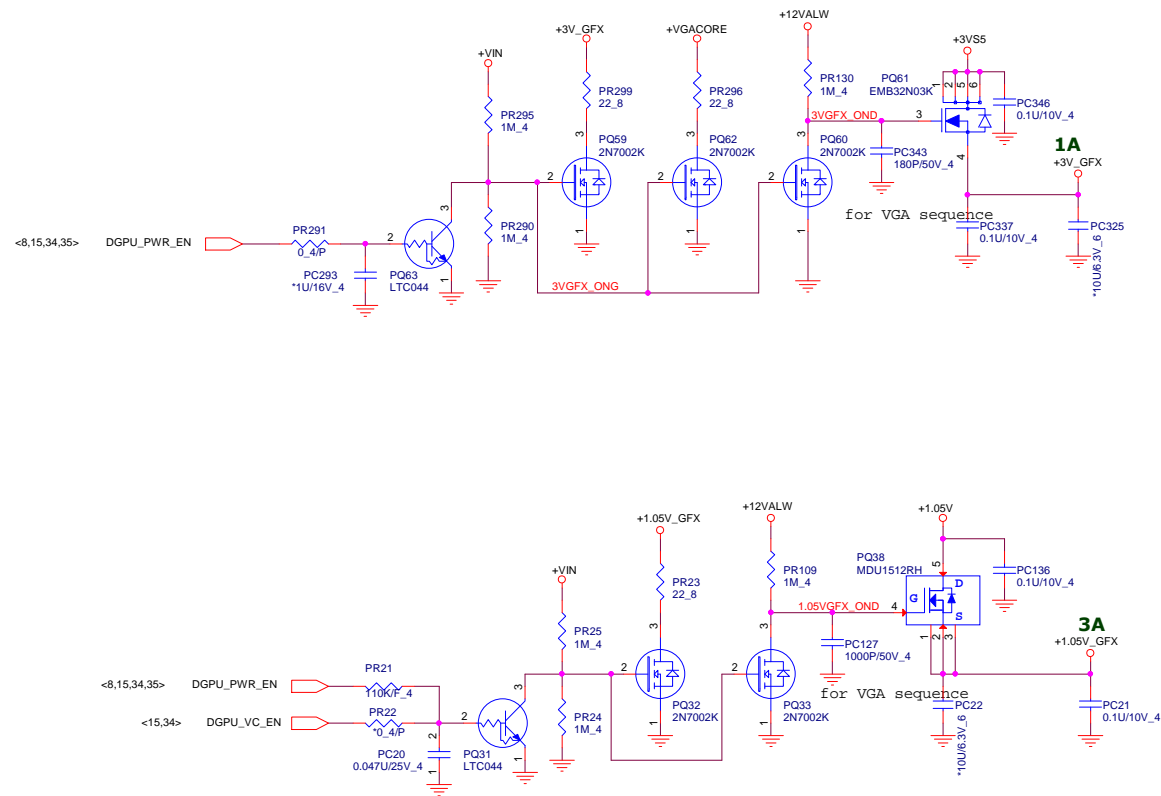





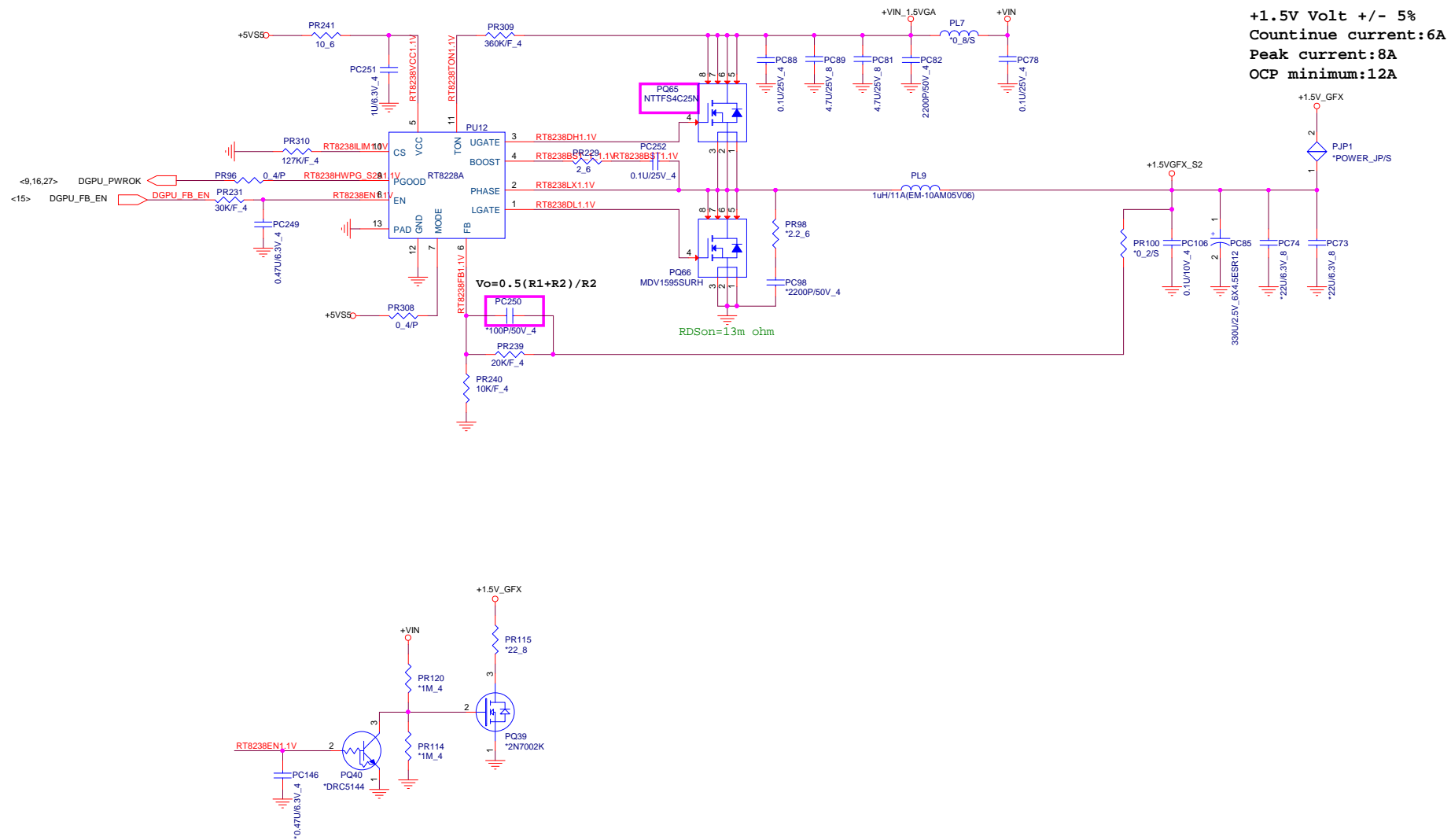



<6,7,8,9,10,11,12,13,14,15,16,17,19,20,21,22,23,24,25,26,27,32,34>	+3V	
	+5V	
<20,24,28,29,30,31,32,34,35,36>	+VIN	
<6,8,10,11,24,26,29,30,35>	+3VS5	
<13,21,24,25,29,31,32,34,36>	+5VS5	
<23,28,35>	+12VALW	
<22,26>	+3VLANVCC	
<12,13,31>	+0.75V_DDR_VTT	





		PROJECT :U82 Quanta Computer Inc.	
		Size Custom	Rev 1A
Document Number 1.05V_VGA/3V_VGA		Date: Friday, April 26, 2013	
Sheet 35 of 40			



	PROJECT :U82		
	Quanta Computer Inc.		
	Size Custom	Document Number +1.5V_VGA(RT8228)	Rev 1A
	Date: Friday, April 26, 2013	Sheet 36	of 40

USB3.0	Port Assignment	Power control pin
PORT1	USB2.0/USB3.0 COMBO 1st	USBPW_ON#(from EC)
PORT2	USB2.0/USB3.0 COMBO 2nd	USBPW_ON#(from EC)
PORT3	NC	N/A
PORT4	NC	N/A

USB2.0	Port Assignment	Power control pin
PORT0	USB2.0/USB3.0 COMBO 1st	USBPW_ON#(from EC)
PORT1	USB2.0/USB3.0 COMBO 2nd	USBPW_ON#(from EC)
PORT2	Camera	N/A
PORT3	NC	N/A
PORT4	NC	N/A
PORT5	Left side USB daughter B	USBPW_ON#(from EC)
PORT6	WLAN	N/A
PORT7	Touch Screen 15" used	TS_ON(from EC)

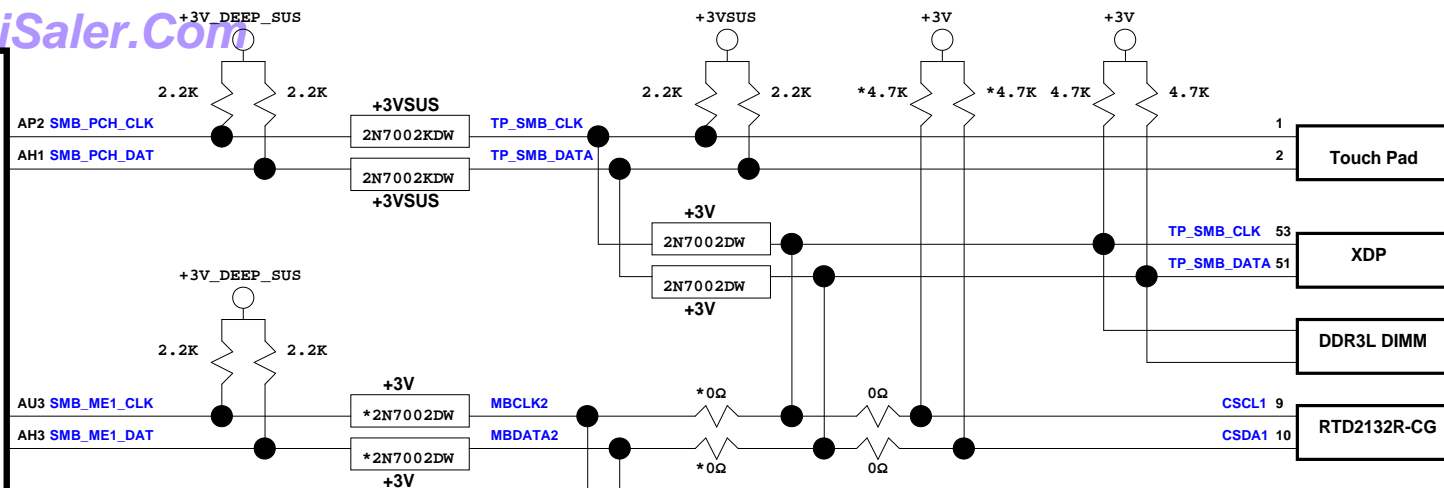
SATA Master	Port Assignment	Power control pin
SATA0	HDD	N/A
SATA1	mSATA	N/A
SATA2	NC	N/A
SATA3/PCIE	Card reader	N/A

PCIE	Port Assignment	Control pin
PCIE 5_L0	PEG0	
PCIE 5_L1	PEG1	
PCIE 5_L2	PEG2	
PCIE 5_L3	PEG3	
PCIE 1	NC	
PCIE 2	NC	
PCIE 3	WLAN	
PCIE 4	LAN	

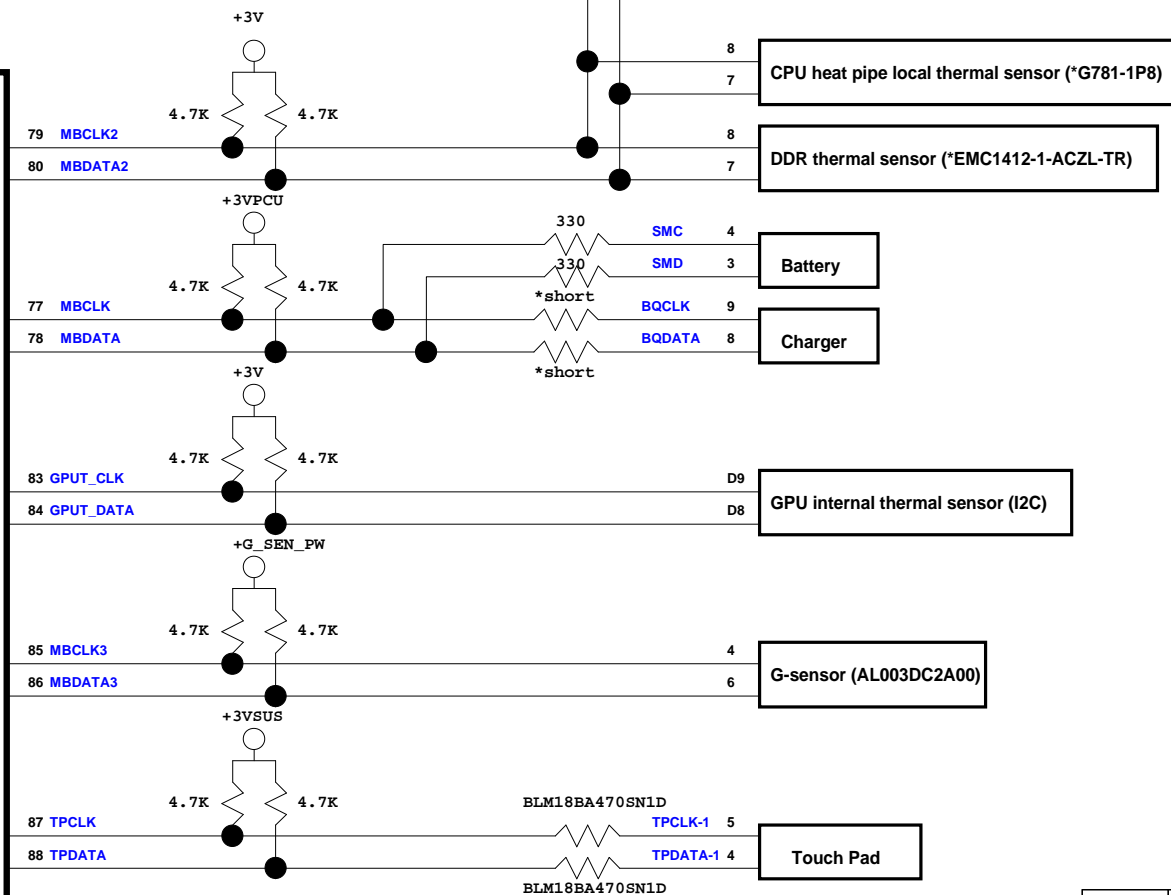


PROJECT :U82
Quanta Computer Inc.

Haswell
ULT



EC
KB9010QF



PROJECT :U82
Quanta Computer Inc.

Document Number
SMBUS

Rev
1A

